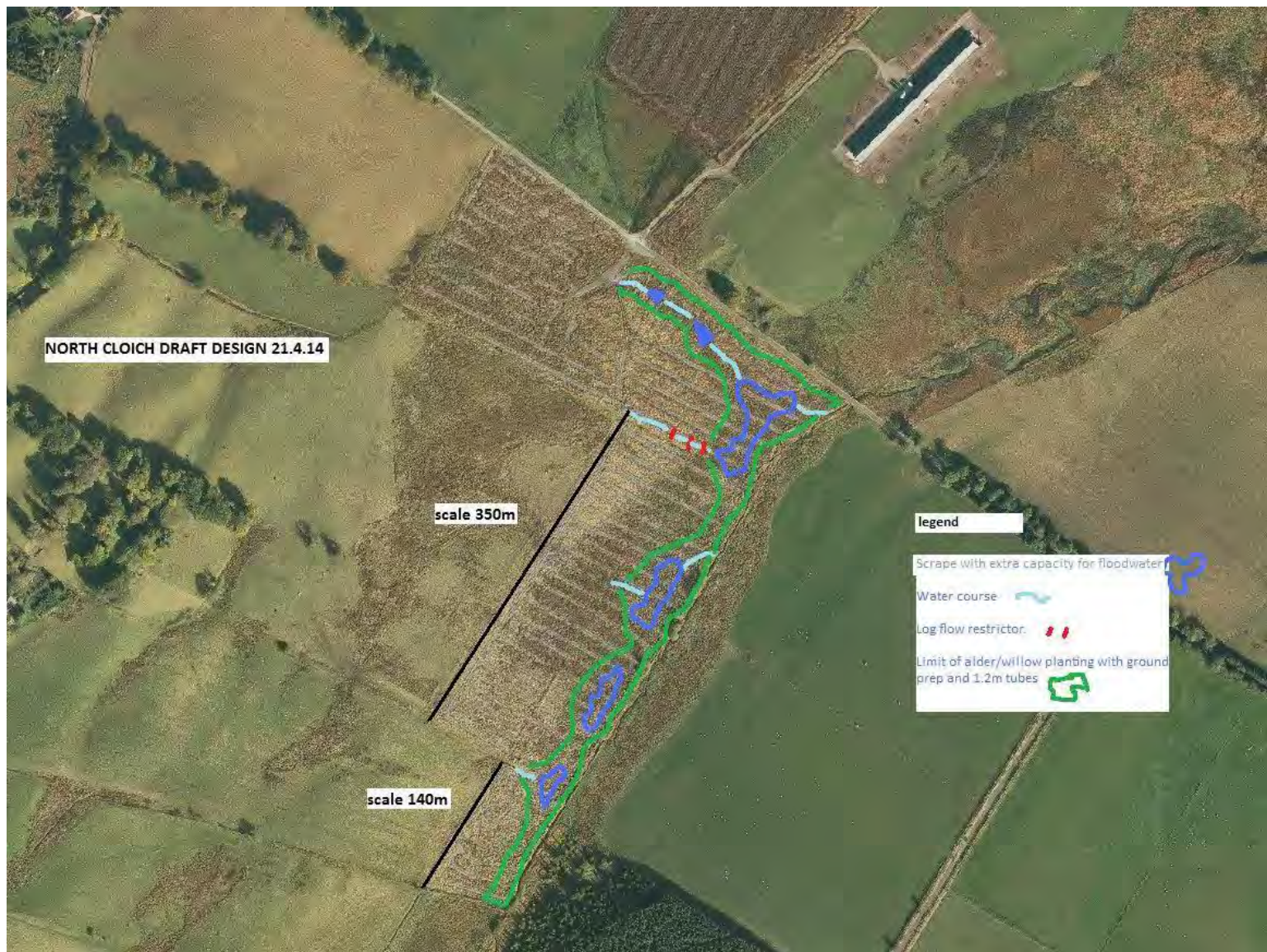




Ruddenleys - March 2014





North Cloich - March 2014





North Cloich - March 2014



North Cloich and Wester Deans - March 2014





North Cloich - Flood storage pond in action— 5.6.2014





Craigburn re-profiling upstream reach. About to start



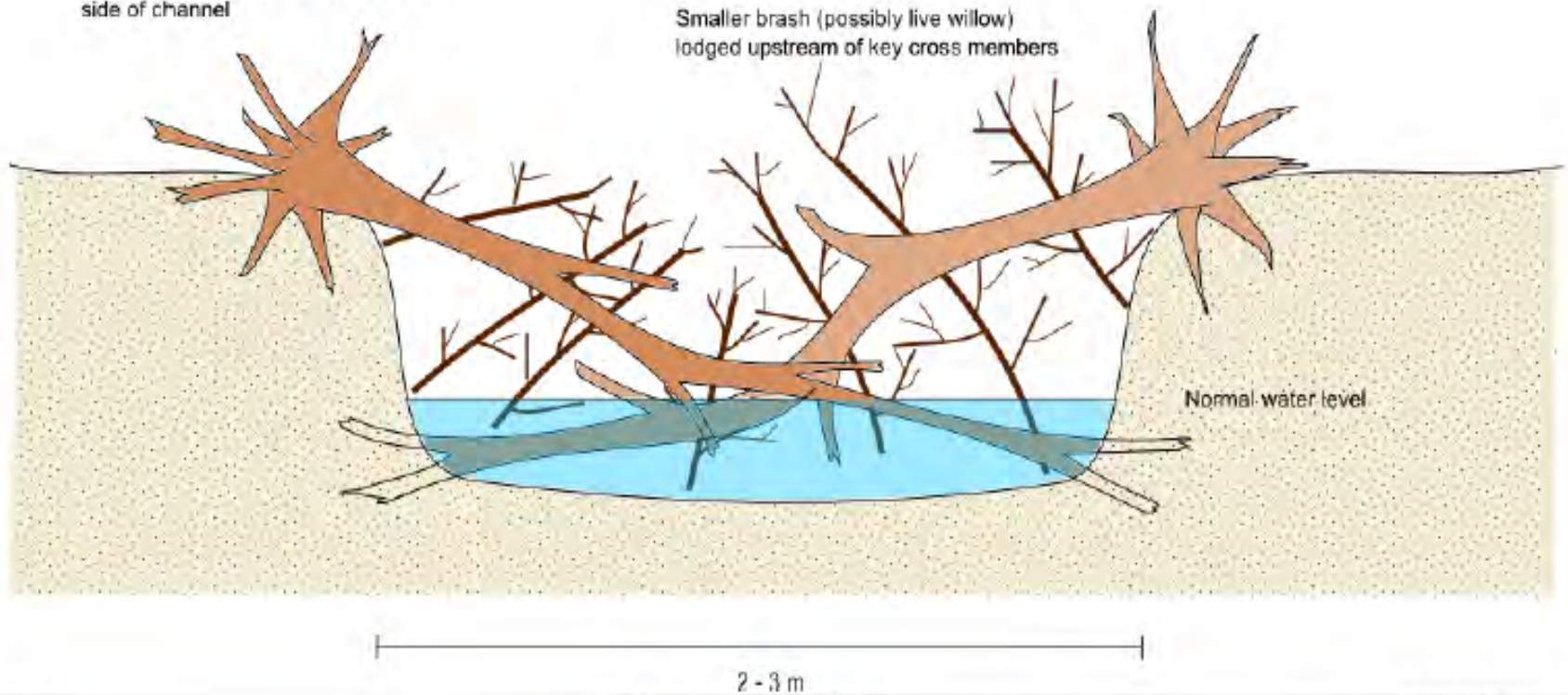


Craigburn 800m reach to be restored using 34 log jams. About to start

## LOOKING UPSTREAM

Key cross members (natural wood),  
keyed into top of bank (root ball) and  
base of bank (top of trunk) on opposite  
side of channel

Smaller brush (possibly live willow)  
lodged upstream of key cross members



Notes:



*Craigburn Restoration*  
**Indicative design of typical engineered log jam/ 'leaky dam'**

Project No. 14-1010

Created By: CM

**Figure 2**

Craigburn. Design of leaky log barrier.





Bowanhill. Tweed Forum and SRUC Farm visit to see new channel and floodplain woodland





Bowanhill. Jan 2014. New channel developments





Bowanhill. August 2013. New channel route,





Bowanhill. Sept 2014. New channel route, vegetation regrowth





Bowanhill. Sept 2014. New channel , vegetation regrowth. SRDP wet woodland





Whitehope Burn 7ha native riparian woodland planting





Whitehope Burn 7ha native riparian woodland planting. Feb 2012





Whitehope Burn 7ha native riparian woodland planting. May 2014





Annelshope, Ettrick, Flood plain flood water storage pond. 4.4.14





Annelshope, Ettrick, Flood plain flood water storage pond. 10.4.14





Mountbenger, Ettrick, Blocking eroding drains on deep peat. Measuring peat depth.





Mountbenger, Ettrick, Blocking eroding drains on deep peat. SBC Glenkerie funded activity.