

# Live Demo



# Loch Morar / Loch Ness

## Loch Morar

Water Body ID 21466

Loch Morar is a large freshwater lake located in Highland, Scotland. It is generally deep with low alkalinity and is situated at low altitude.

Surface Area	2683 ha
Mean Depth	86.6 m
Maximum Depth	310.0 m
Catchment Area	16852 ha
Grid Reference	NM76129087
Altitude	14 m A.O.D.



lat, lon: 56.9548,-5.6844

☒ Show selected lake ☒ Show all lakes ☐ Show lake catchment

4km  
3mi

Parameters

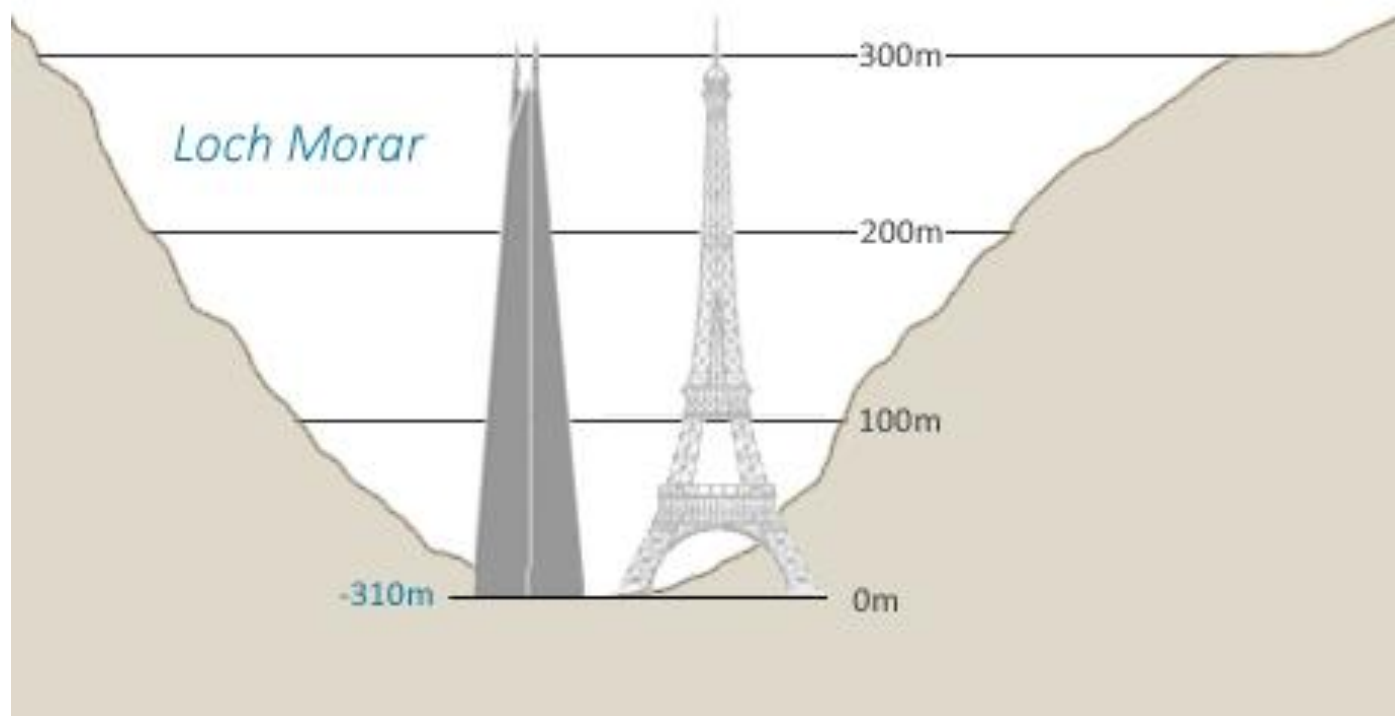
Typology

Chemistry

Land cover

Biology

Perimeter Length	59 km
Shoreline Development Index [?]	3.23
Fetch Distance [?]	18 km
Distance to Sea [?]	1 km
Water Body Volume [?]	2323589368 m3
Catchment-to-Lake Ratio [?]	6.3



## Loch Ness

Water Body ID 18767

Loch Ness is a large freshwater lake located in Highland, Scotland. It is generally deep with low alkalinity and is situated at low altitude.

Surface Area	5533 ha
Mean Depth	132.0 m
Maximum Depth	229.8 m
Catchment Area	178188 ha
Grid Reference	NH50402395
Altitude	17 m A.O.D.



lat, lon: 57.2818,-4.4829

☒ Show selected lake ☒ Show all lakes ☐ Show lake catchment



Parameters

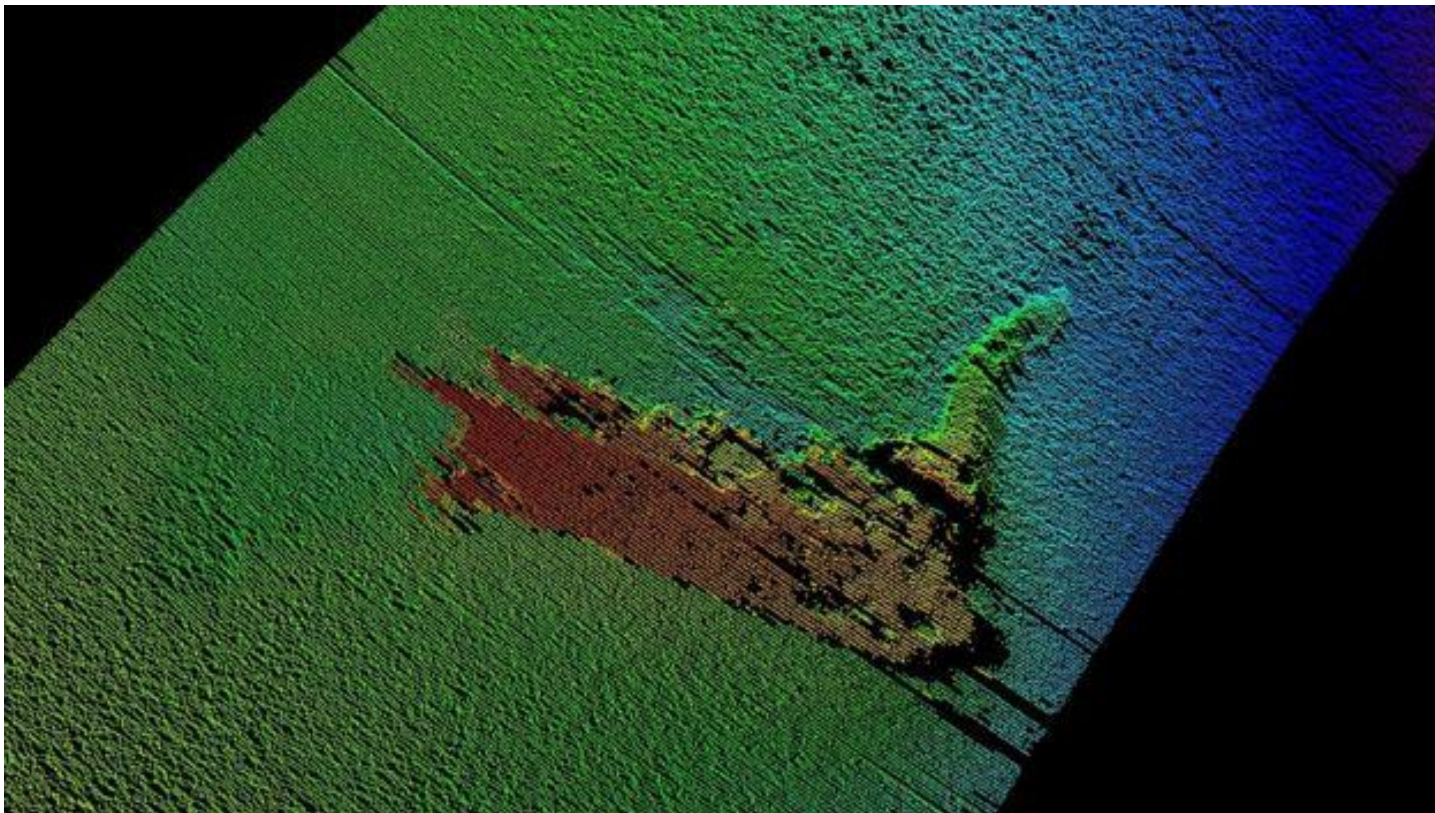
Typology

Chemistry

Land cover

Biology

Perimeter Length	80 km
Shoreline Development Index [?]	3.03
Fetch Distance [?]	36 km
Distance to Sea [?]	8 km
Water Body Volume [?]	7304034672 m3
Catchment-to-Lake Ratio [?]	32.2



<http://www.bbc.co.uk/news/uk-scotland-highlands-islands-36024638>



## NEWS

Find local news

[Home](#) [UK](#) [World](#) [Business](#) [Politics](#) [Tech](#) [Science](#) [Health](#) [Education](#) [Entertainment & Arts](#) [Video & Audio](#) [More](#)[Scotland](#) [Scotland Election 2016](#) [Scotland Business](#) [Edinburgh, Fife & East](#) [Glasgow & West](#) [More](#)[Highlands & Islands](#)

## Film's lost Nessie monster prop found in Loch Ness

By Steven McKenzie  
BBC Scotland Highlands and Islands reporter

13 April 2016 | [Highlands & Islands](#)



A still from the movie showing the new prop made following the loss of the 30ft version

### Top Stories

#### Drone hits British Airways plane near Heathrow

A British Airways plane approaching Heathrow Airport is believed to have been hit by a drone before it landed safely, police say.

7 minutes ago

#### Ecuador quake deaths rise to 235

2 hours ago

#### Two teens charged over Spalding deaths

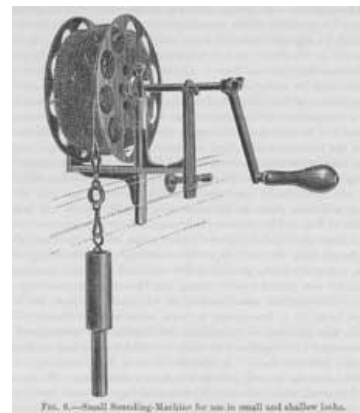
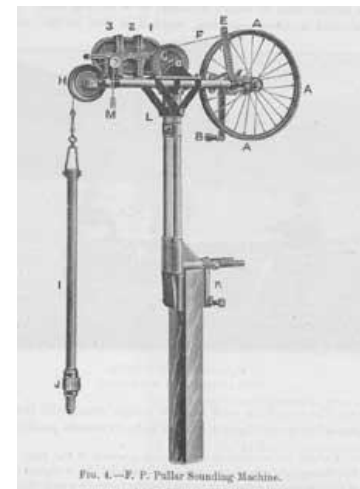
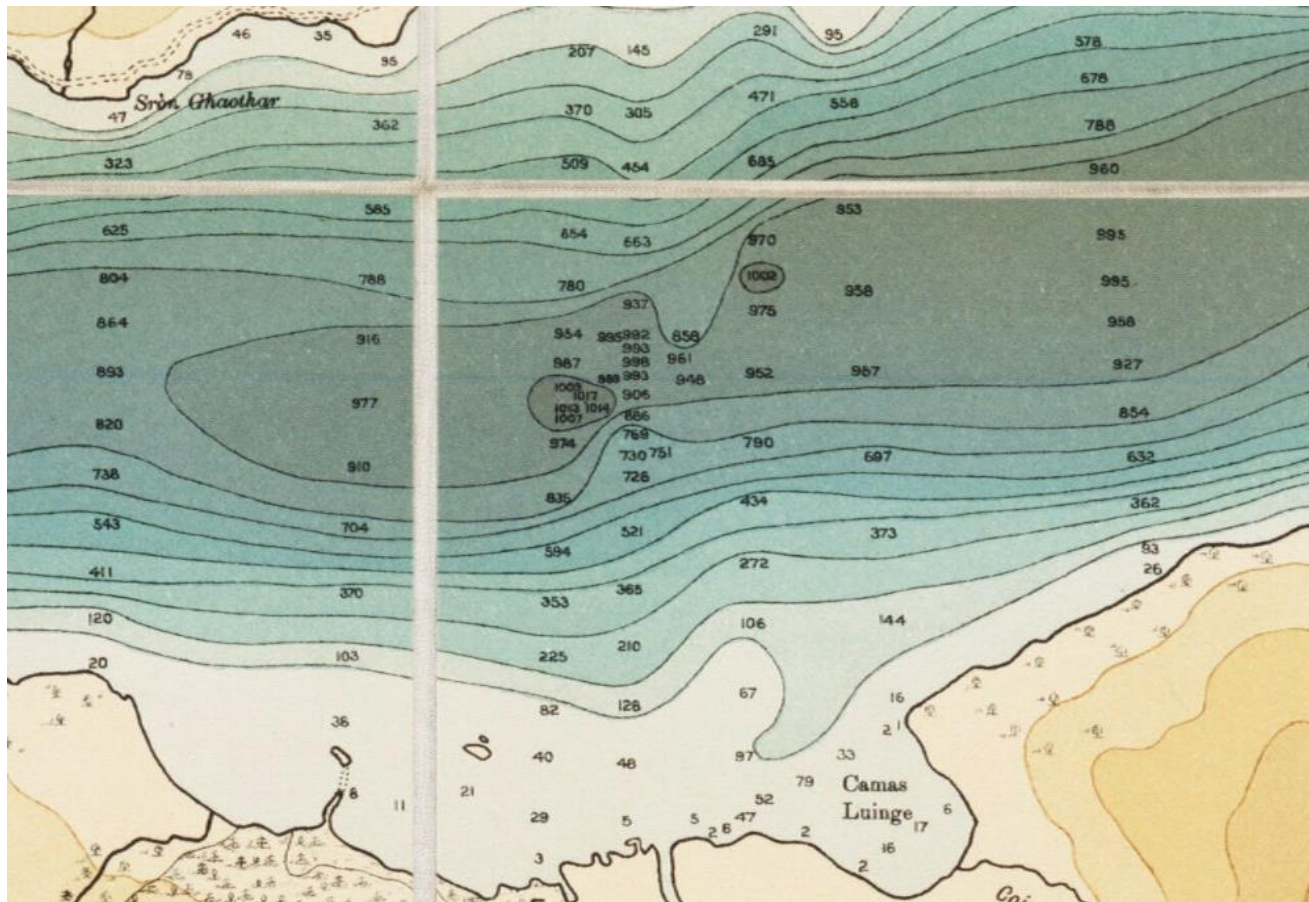
7 hours ago

### Features



#### Free-range kids

The children uprooted to live the 1970s  
Good Life



Murray & Pullar, 1904. <http://maps.nls.uk/view/74400565>



# Loch Lomond / NBN Data

# UK Freshwater Species List

Group	Native	Non-Native	Total	%Native
Freshwater_Alga			5956	
Freshwater_Macrophyte	1111	110	1221	91%
Freshwater_Invertebrate			5796	
Freshwater_Amphibian	15	51	66	23%
Freshwater_Fish	69	35	104	66%
Freshwater_mammal	5	3	8	63%
Freshwater_Reptile	1	5	6	17%
<b>Grand Total</b>	<b>1201</b>	<b>204</b>	<b>13157</b>	





# Loch Lomond

Water Body ID 24447

Loch Lomond is a large freshwater lake located in Argyll and Bute, Scotland. It is generally deep with low alkalinity and is situated at low altitude.

Surface Area	7073 ha
Mean Depth	37.0 m
Maximum Depth	189.9 m
Catchment Area	76321 ha
Grid Reference	NS37049448
Altitude	4 m A.O.D.



lat, lon: 56.1130,-4.6211

☒ Show selected lake ☒ Show all lakes ☐ Show lake catchment

20km  
10mi

Parameters

Typology

Chemistry

Land cover

Biology

Perimeter Length	138859 km
Shoreline Development Index [?]	4.66
Fetch Distance [?]	14255 km
Distance to Sea [?]	2255 km
Water Body Volume [?]	2617021840 m3
Catchment-to-Lake Ratio [?]	0.1

# Loch Lomond – Biology Data

[Parameters](#)[Typology](#)[Chemistry](#)[Land cover](#)[Biology](#)

This tab provides an indication of species occurrence in and around the lake. The data is provided by the [National Biodiversity Network \(NBN\)](#) and its use is subject to the [NBN Gateway Terms and Conditions](#). These results are not indicative of the full range of species found at the site and should be used accordingly. For more information about this tab please read [Where do the biological data come from?](#)

[Fetch NBN Data](#)

Start and end year: 2000

This site can be viewed on NBN Gateway [↗](#)[New observation for this lake ↗](#)Filter table by UK Lakes Groups: [algae](#) [amphibians](#) [birds](#) [crustacea](#) [fish](#) [fungi](#) [insects](#) [mammals](#) [molluscs](#) [other invertebrates](#) [plants](#) [reptiles](#) [all](#)☐ Show only species in UK Lakes Group containing freshwater species

Found 1446 taxa around this lake.

Show 10 entries

Quick Search: 

Common Name	Name	Rank	NBN Group	Observations	UK Lakes Group
Reed Bunting	<a href="#">+ Emberiza schoeniclus</a>	Species	bird	43	bird

Showing 1 to 1 of 1 entries (filtered from 1,446 total entries)

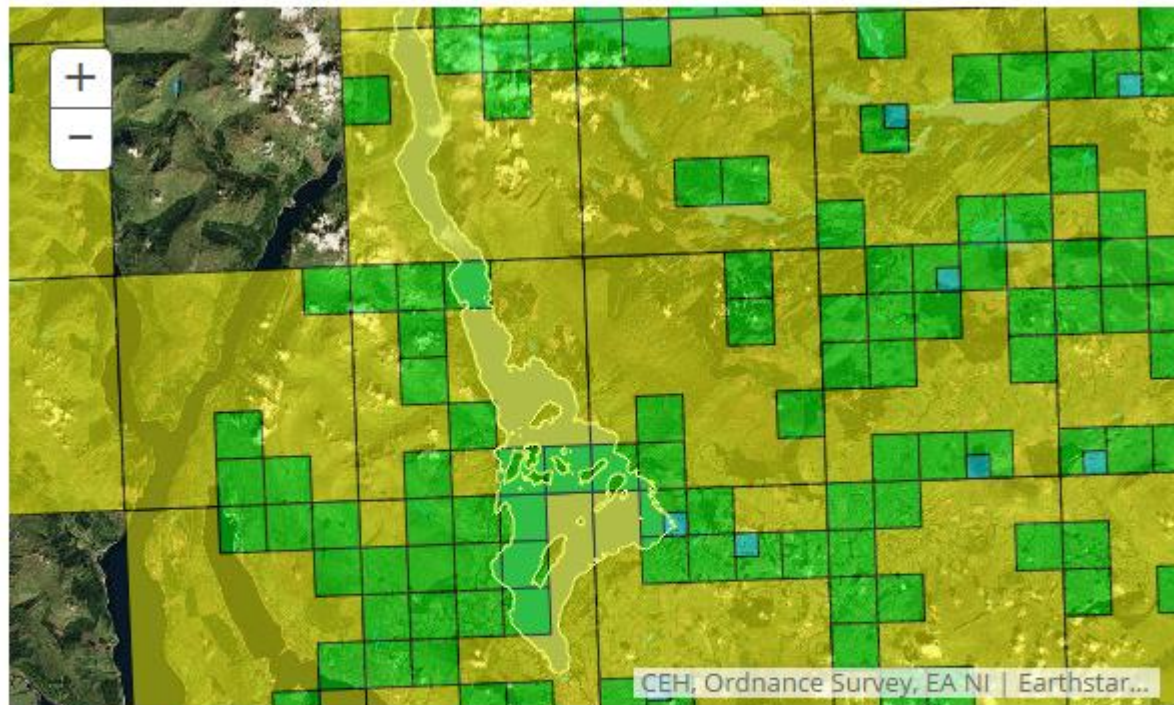
[Previous](#)

1

[Next](#)



## Reed Bunting... 😊

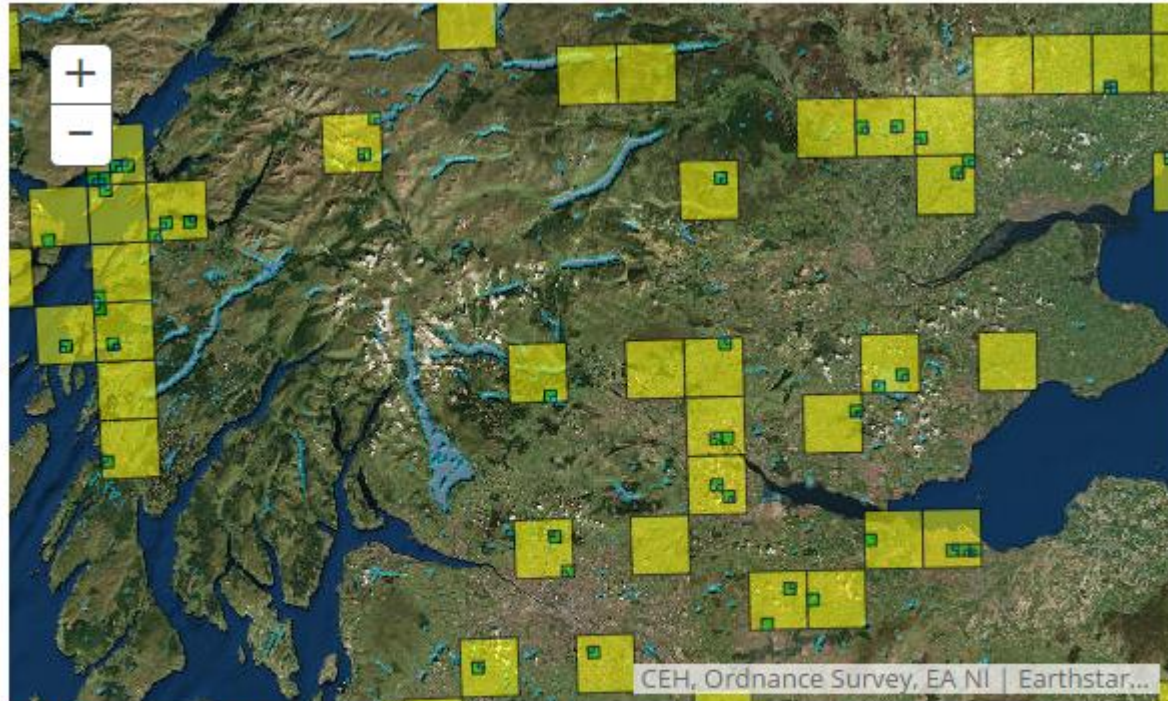


lat, lon: 56.1130,-4.6211

☒ Show selected lake ☒ Show all lakes ☐ Show lake catchment

Showing records of *Emberiza schoeniclus* (since 2000)

## Common Reed... ☹



lat, lon: 54.3601,-2.9458

☒ Show selected lake ☒ Show all lakes ☐ Show lake catchment

Showing records of *Phragmites australis* (since 2000)

# Loch Lomond – Biology Data

[Parameters](#)[Typology](#)[Chemistry](#)[Land cover](#)[Biology](#)

This tab provides an indication of species occurrence in and around the lake. The data is provided by the [National Biodiversity Network \(NBN\)](#) and its use is subject to the [NBN Gateway Terms and Conditions](#). These results are not indicative of the full range of species found at the site and should be used accordingly. For more information about this tab please read [Where do the biological data come from?](#)

[Fetch NBN Data](#)

Start and end year: 2000

This site can be viewed on NBN Gateway [↗](#)[New observation for this lake ↗](#)Filter table by UK Lakes Groups: [algae](#) [amphibians](#) [birds](#) [crustacea](#) [fish](#) [fungi](#) [insects](#) [mammals](#) [molluscs](#) [other invertebrates](#) [plants](#) [reptiles](#) [all](#)☐ Show only species in UK Lakes Group containing freshwater species

Found 1446 taxa around this lake.

Show 10 entries

Quick Search: 

Common Name	Name	Rank	NBN Group	Observations	UK Lakes Group
Reed Bunting	<a href="#">+ Emberiza schoeniclus</a>	Species	bird	43	bird

Showing 1 to 1 of 1 entries (filtered from 1,446 total entries)

[Previous](#)

1

[Next](#)

## Enter records for the Loch Lomond (WBID 24447)

[Where Was It?](#)[What Did You See?](#)

### Search UK Lakes:

\*

Provide the name of the location within the site to help observations to be relocated.

### Enter a spatial reference:



### Or search for a place on the map:

[Search](#)

Or simply click on your rough position on the map.

Good. 100m square selected. We've switched to a satellite view to allow you to locate your position even better.

### Habitat:

### Overall comment:



## Enter records for the Loch Lomond (WBID 24447)

 Where Was It?

 What Did You See?

Date:

 20/04/2016





\*

Recorder Name:

 Taylor, Philip


Enter the recorder's name, if different.

Please enter all the species you saw at one site on a single day and any other information about them. Then move to the **Where was it?** tab before submitting your records.

Species 	Quantity	Stage	Certainty	Identified By	Comment	Sensitivity	Add photos
 Common Reed - <i>Phragmites australis</i> flowering plant 	10	▼	Certain ▼	Taylor, Philip		Not sensitive ▼	<a href="#">Add images</a>
		▼	▼	Taylor, Philip		Not sensitive ▼	Select a species first

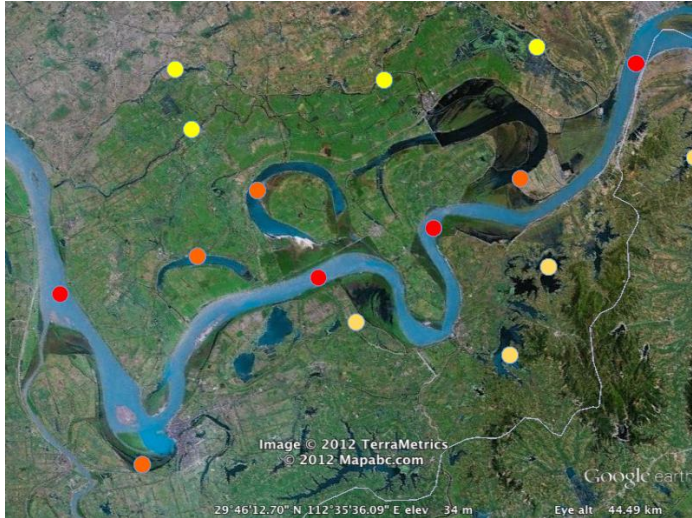
Use \* as a wildcard when searching for species names.

[Submit](#)



# Research Using the Portal





**Hydroscape**  
CONNECTIVITY x STRESSOR INTERACTIONS

*How does connectivity influence the distribution of organisms & nutrients within and between landscapes?*

*How is this relationship altered by different stressors, singly and in combination?*



Upland (Cumbria)



Lowland (Norfolk)



Urban (Glasgow)

# Integrating Water-Land-Species Data



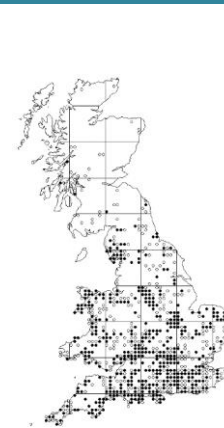
Intelligent River Network



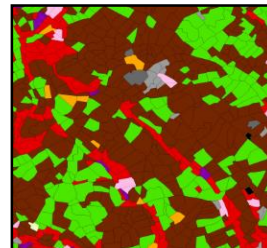
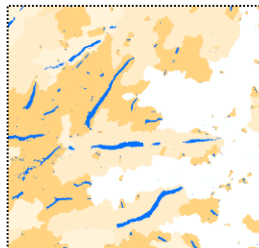
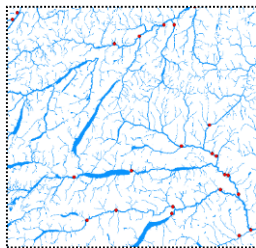
UK Lakes Database



Land Cover Data



Species Data



National-scale  
analysis



# UK Lakes – the stats

Country	Number	Area (km <sup>2</sup> )	Vol. (x10 <sup>6</sup> m <sup>3</sup> )
England	5710	467	3054
Scotland	8033	1473	33546
Wales	599	84	986
<b>Total</b>	<b>14342</b>	<b>2024</b>	<b>37587</b>

Scotland: 89% of volume of water    73% of area

England: 8% of volume of water    23% of area

Wales: 3% of volume of water    4% of area

Source: GB Lakes database v2.2

# Inventory of Natural Capital & Services

## Current Lake NC Data →

- Lake typology data
- Water Quantity – volume, area, flow
- Water Quality – chemical and biological
- Biodiversity & Habitat data

## Use / Value Data

- Nature conservation
- Recreation – water sports
- Recreation - angling
- Tourism



“Bloomin’ Algae”

“FishAdvisor”



<https://eip.ceh.ac.uk/apps/lakes/>

philor@ceh@ac.uk | @ScienceAndMaps

