

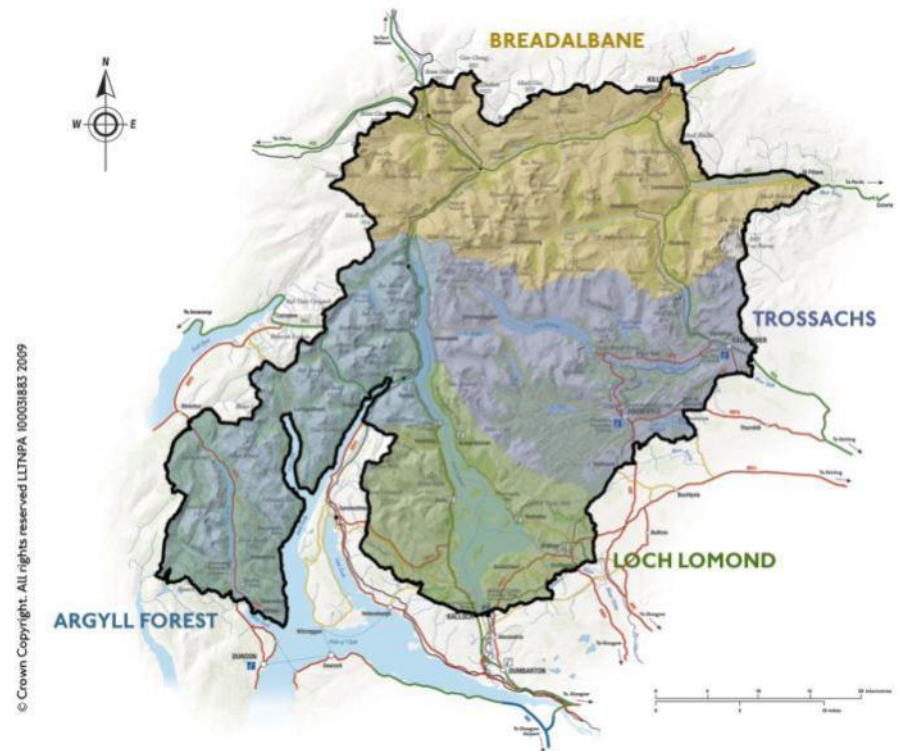
Welcome to Your National Park! ☺



Alan Bell
Conservation Manager

National Park Context

- Established July 2002
- Park covers around 1,865 sq km
- Includes Argyll Forest, Loch Lomond, The Trossachs and Breadalbane
- Around 16,000 people live in the park
- 4.5million visitors a year
- More than 70 per cent of Scotland's population live within an hour's travel time.
- 32 km from the centre of Glasgow



National Park Aims



- Conserve and enhance the natural and cultural heritage
- Promote the sustainable use of the natural resources
- Promote understanding and enjoyment of the special qualities of the area by the public
- Promote sustainable economic and social development of the communities



Loch Lomond and The Trossachs National Park

Area outside
National Park Area inside
National Park



0 5 10 15
Kilometres

This map is based upon Ordnance Survey material with the permission of Ordnance Survey on behalf of the Controller of Her Majesty's Stationery Office. (c) Crown copyright. Unauthorised reproduction infringes Crown copyright and may lead to prosecution or civil proceedings.
Loch Lomond & the Trossachs Interim Committee LA031891 2002.

The representation of features or boundaries in which LLTIC or others have an interest does not necessarily imply their true positions.
For further information please contact the appropriate authority.







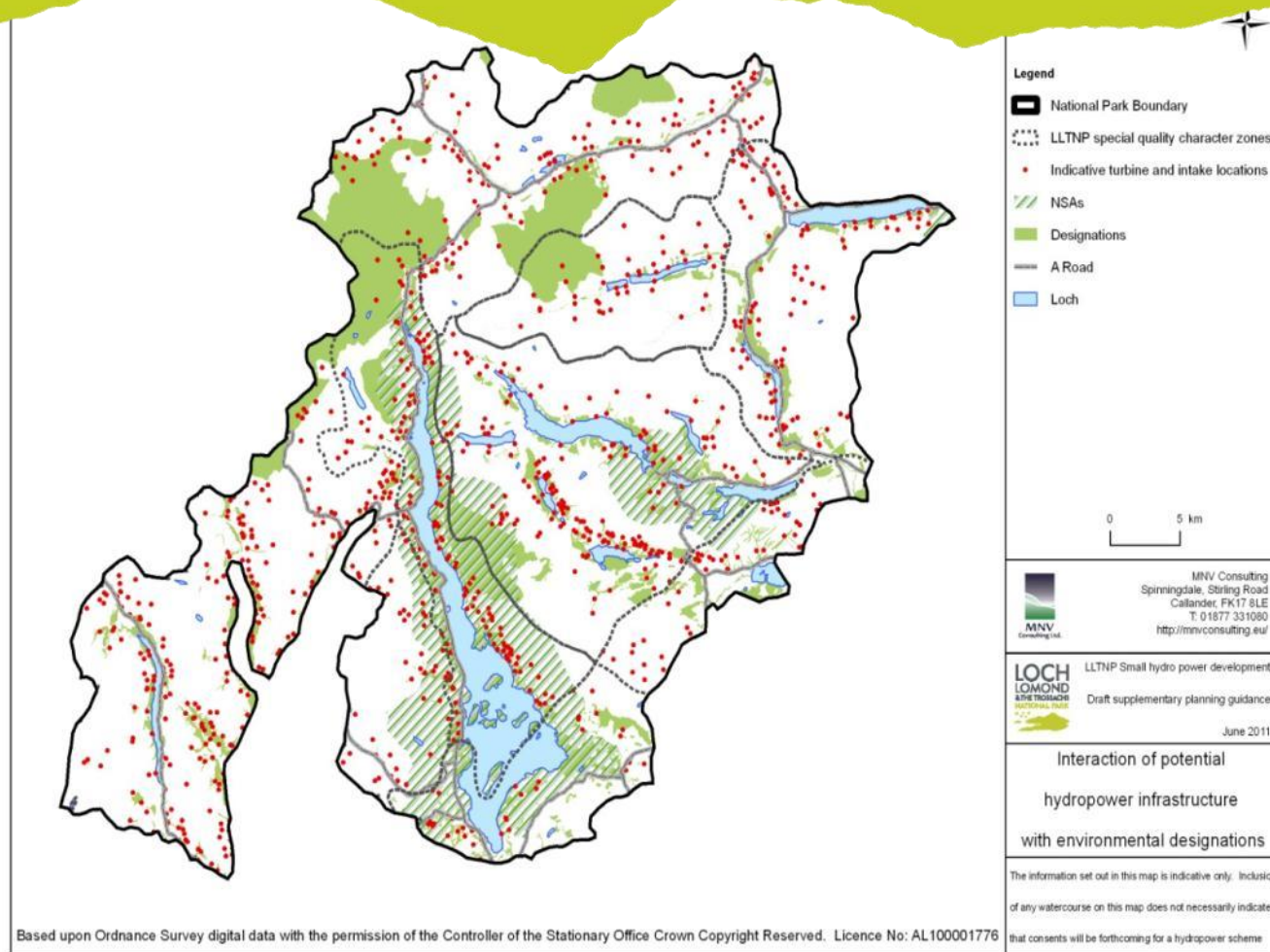
A82 Pulpit Rock





Hydro potential in the NP?

Technical Feasibility Study



Tranquility

LOCH
LOMOND
& THE TROSSACHS
NATIONAL PARK



Popularity



Events and Festivals – The Great Scottish Swim



Flood management

