

# **Catchment and community: making the connections in the River Eden in Fife**


## **River Eden Sustainability Partnership**

**Scottish Freshwater Group  
Stirling**

**24<sup>th</sup> April 2025**

***Outline:***  
***Background***  
***Motivations***  
***What we've done***  
***What next?***



A photograph of a riverbed showing sparse green weeds and brown sediment. The water is shallow, and the riverbed is visible. The text is overlaid on the image.

**Water Quality is  
'poor' or 'moderate'**

**Invasive species**

**Reactive  
phosphorous**

**Diffuse pollution**

**Vital river weed has  
disappeared**

**Summer drought/  
winter storms**

**biodiversity loss**

A photograph of a beaver swimming in a river. The beaver is in the center of the frame, with its head and shoulders above water. It has long, white whiskers and a dark nose. The water is dark green and slightly rippled. In the background, there are tall, thin reeds or grasses. The text "We want to see..." is overlaid in the top left corner in a white, sans-serif font.

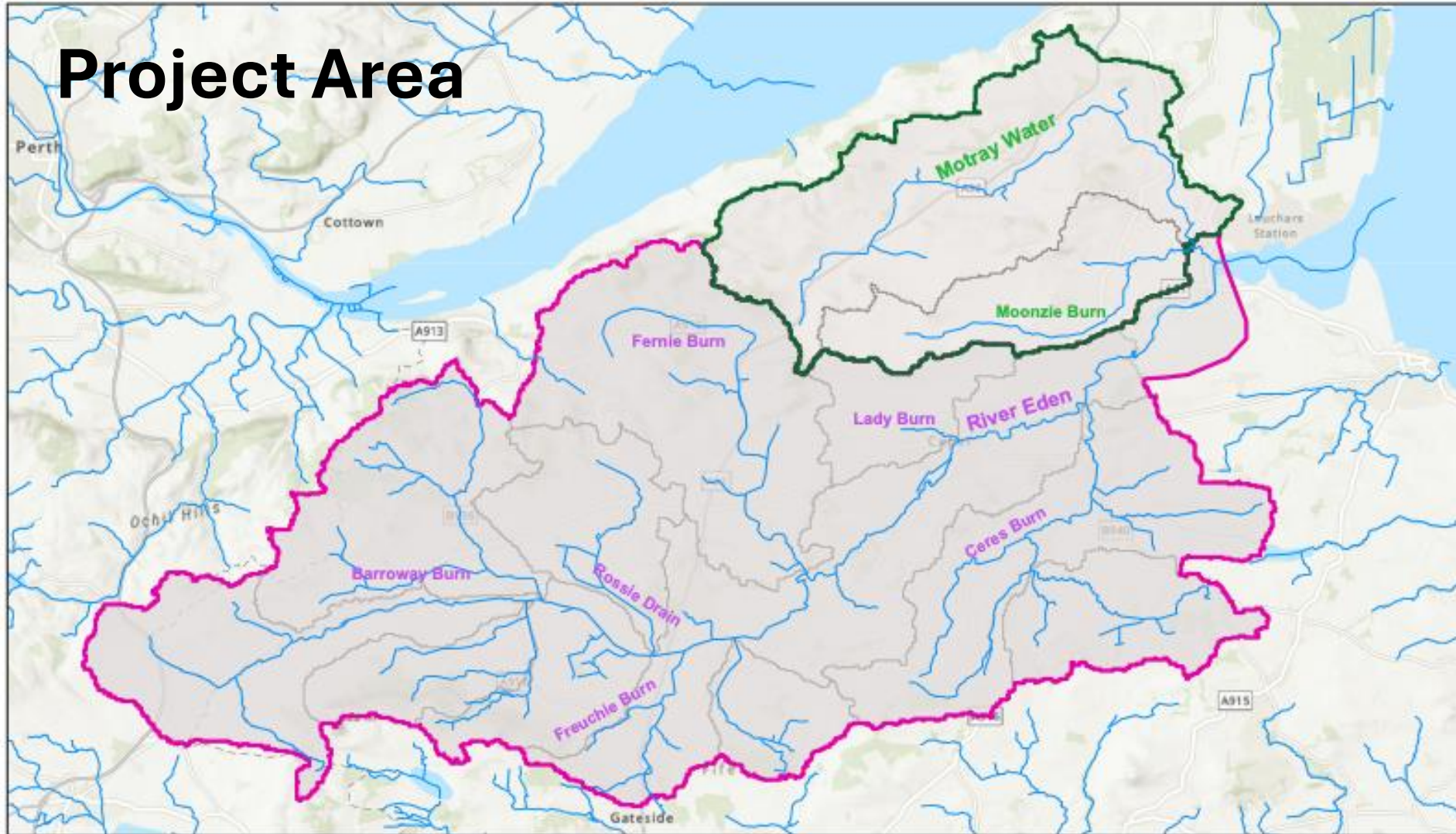
**We want to see...**

**...a restored river corridor, rich in biodiversity, free from invasive non-native species, resilient to climate change and connected to the community for well-being and economic benefit.**

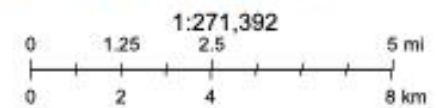
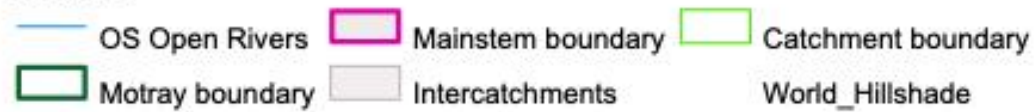
- 
- **A community partnership for the river**
  - **INNS control from source to sea**
  - **Habitat & water quality improvement**
  - **Citizen Science**

**Our Ambition...**

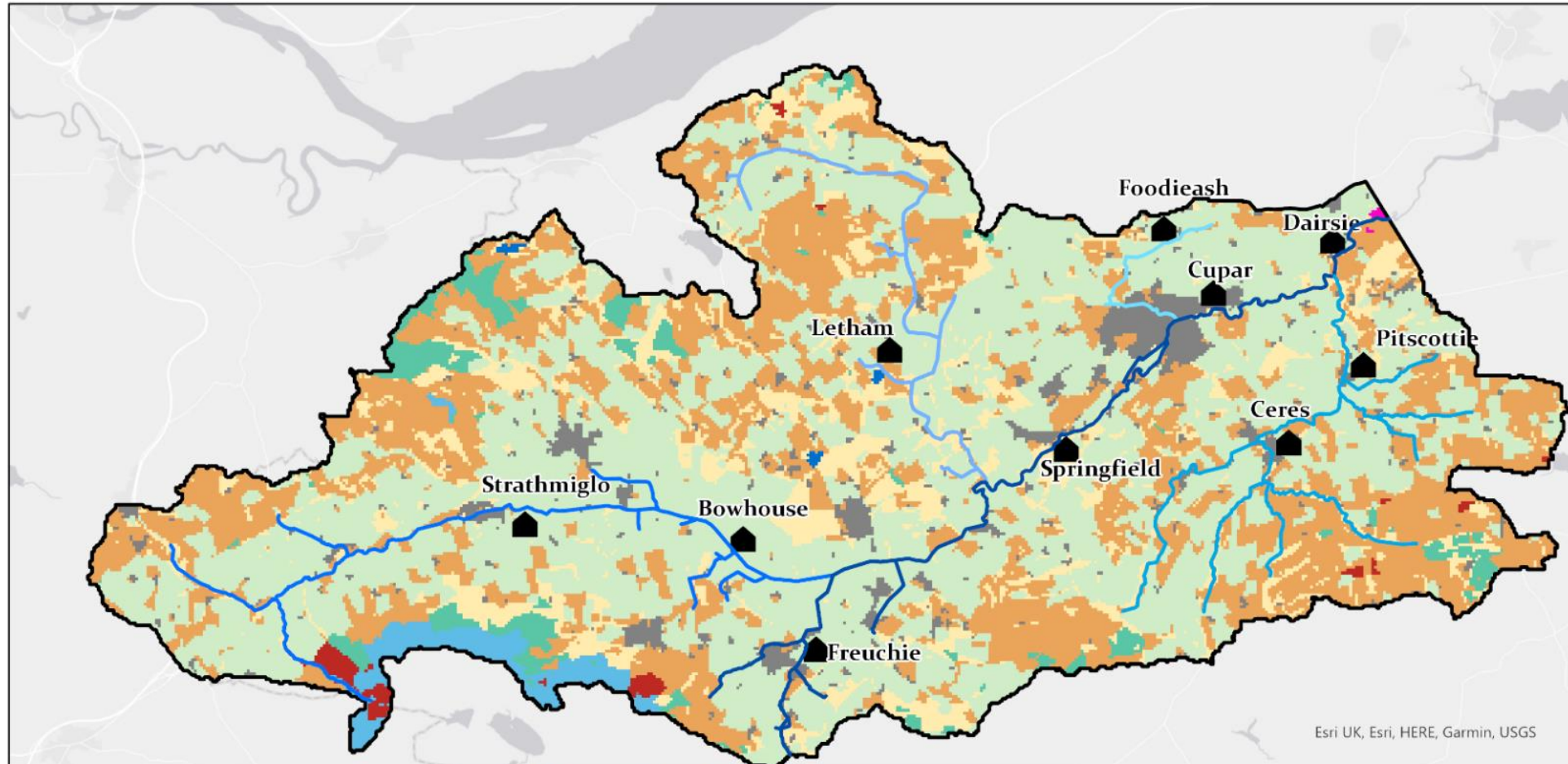
# Project Area



26/03/2025



Source: Esri, TomTom, Garmin, FAO, NOAA, USGS, © OpenStreetMap contributors, and the GIS User Community, Esri, Ordnance Survey, NASA, NGA, USGS

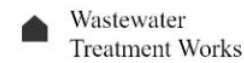


Esri UK, Esri, HERE, Garmin, USGS



Waterbody ID

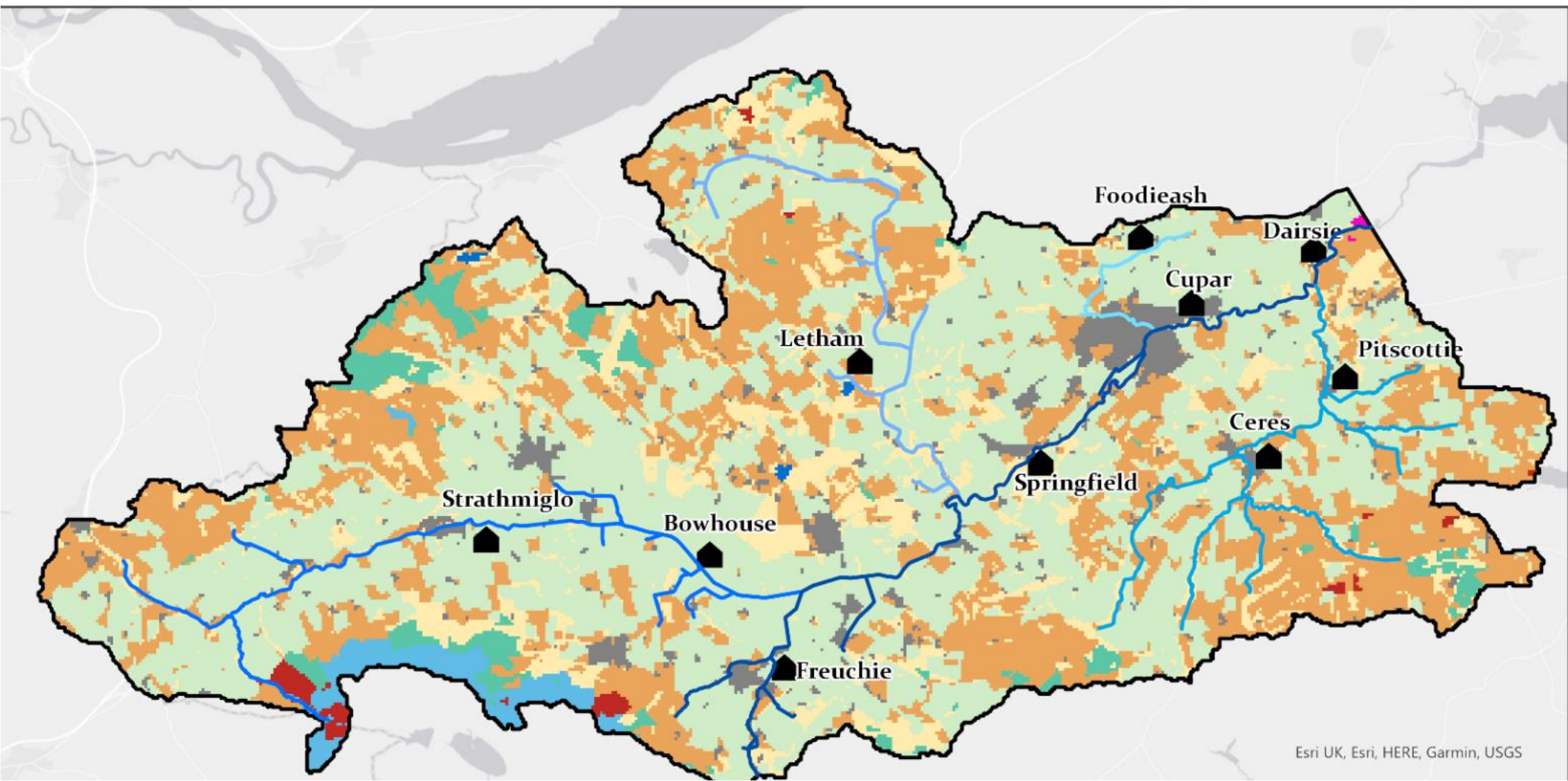
- 6200 Lower Eden
- 6201 Upper Eden
- 6202 Ceres Burn
- 6205 Foodieash Burn
- 6206 Fernie Burn

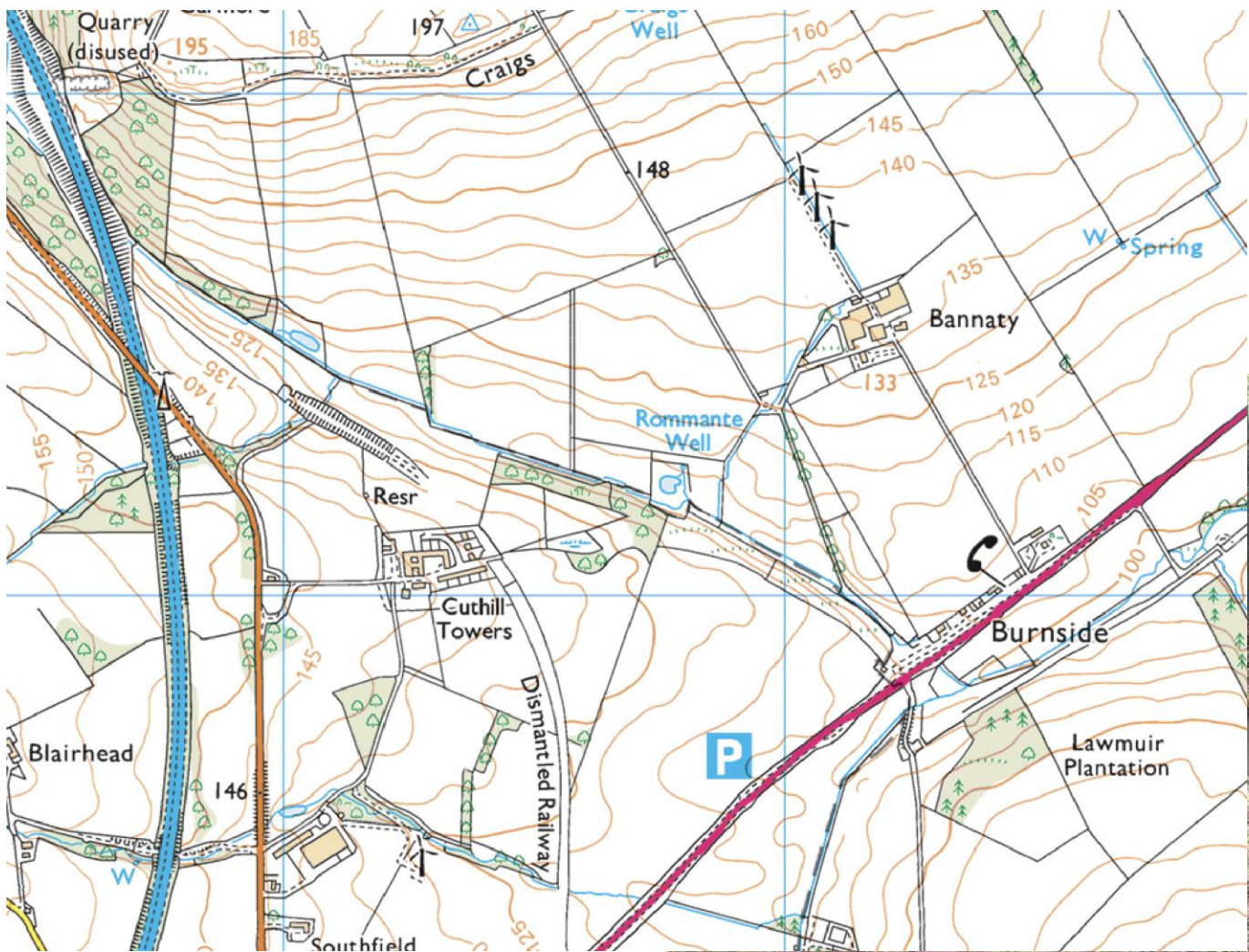


Wastewater Treatment Works

Land Cover (2020)

- Broadleaf Woodland
- Coniferous Woodland
- Arable
- Improved Grassland
- Semi-Natural Grassland
- Heath/Bog
- Freshwater
- Coastal
- Urban

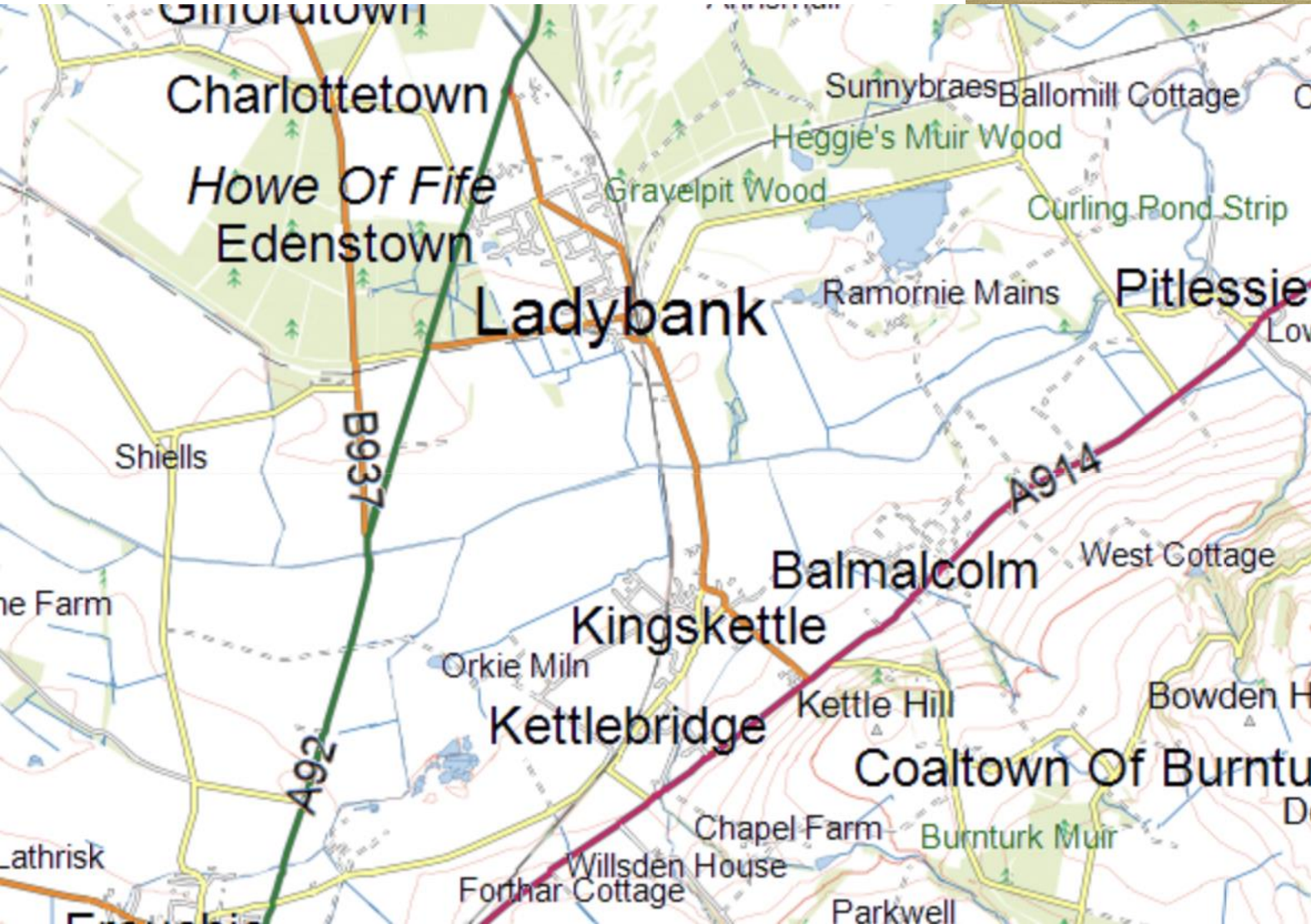




**Burnside**



# Ladybank

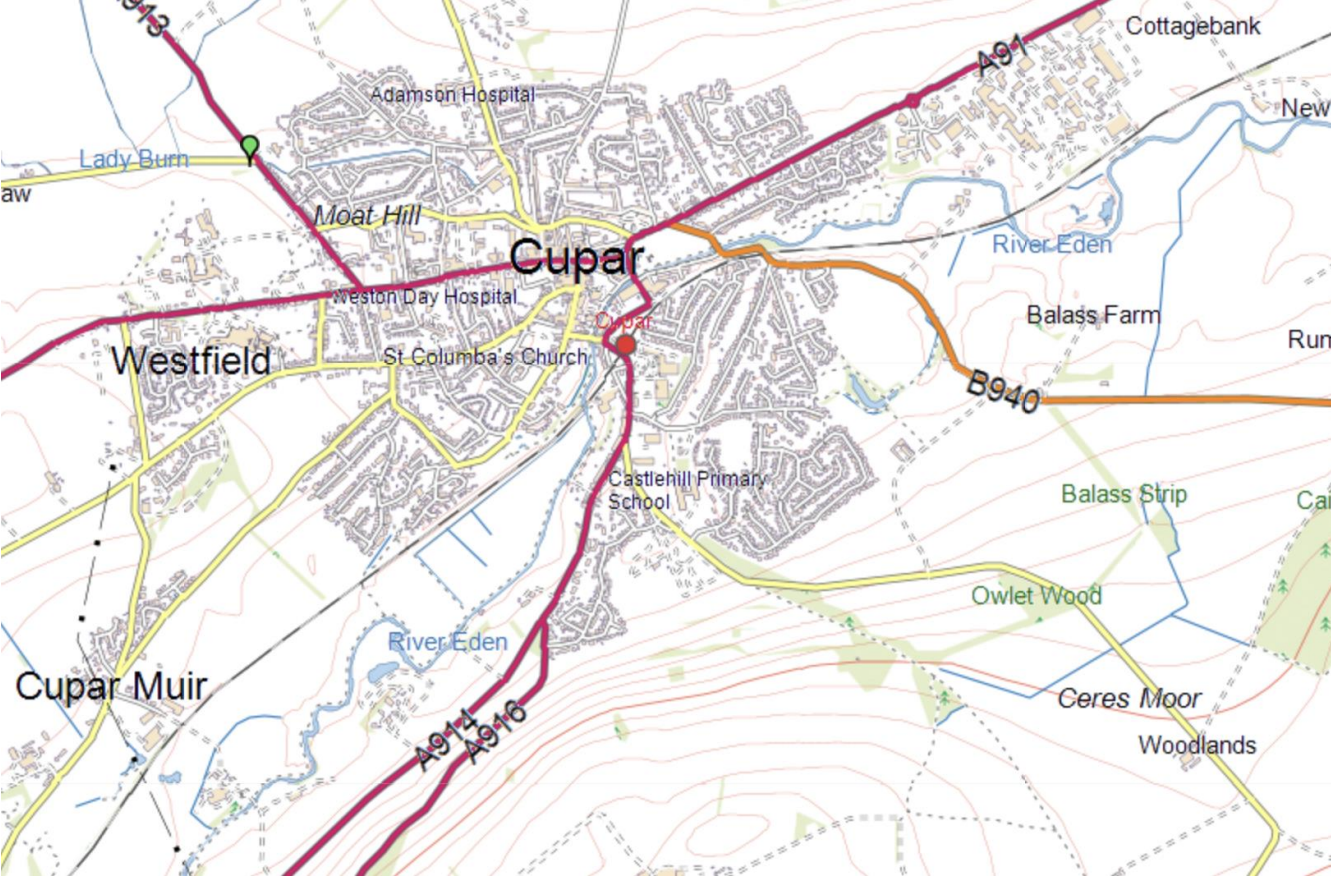




River Eden

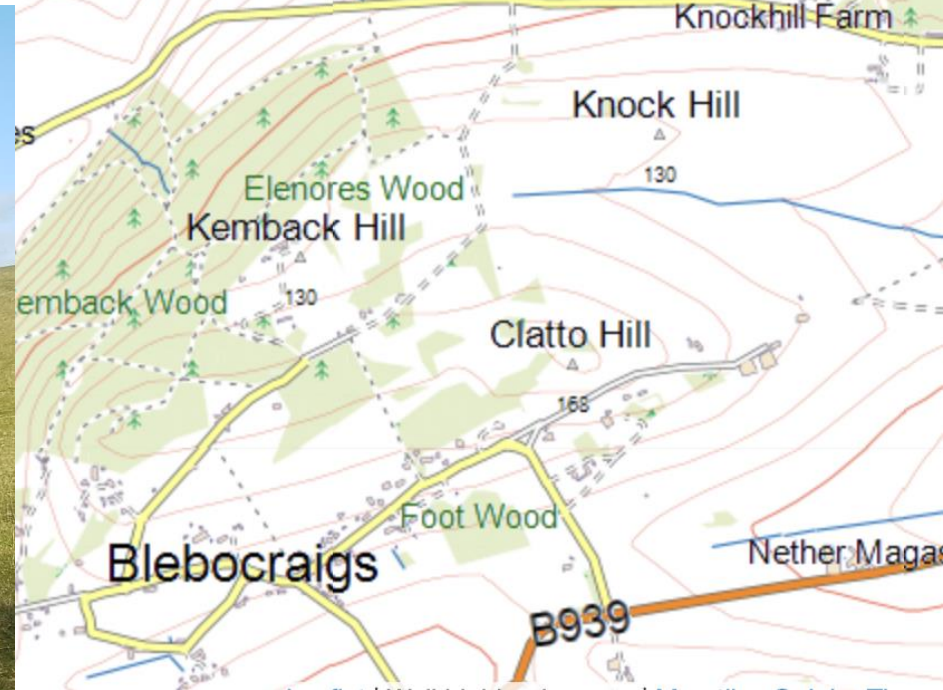
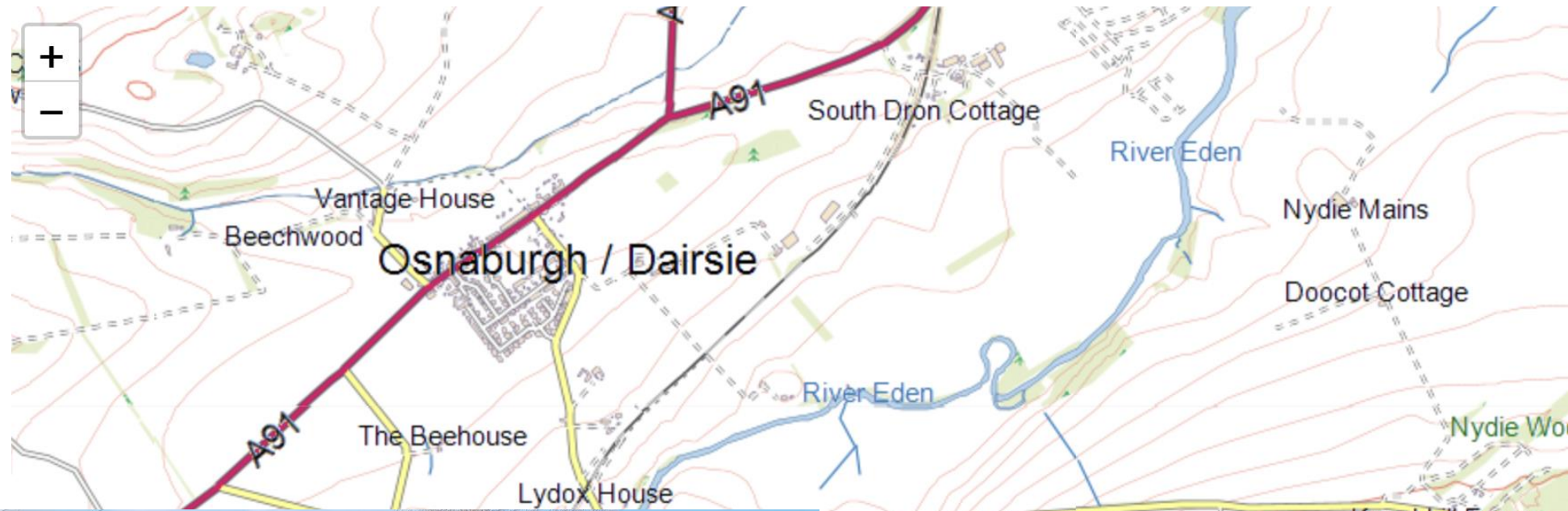
River Eden

A914



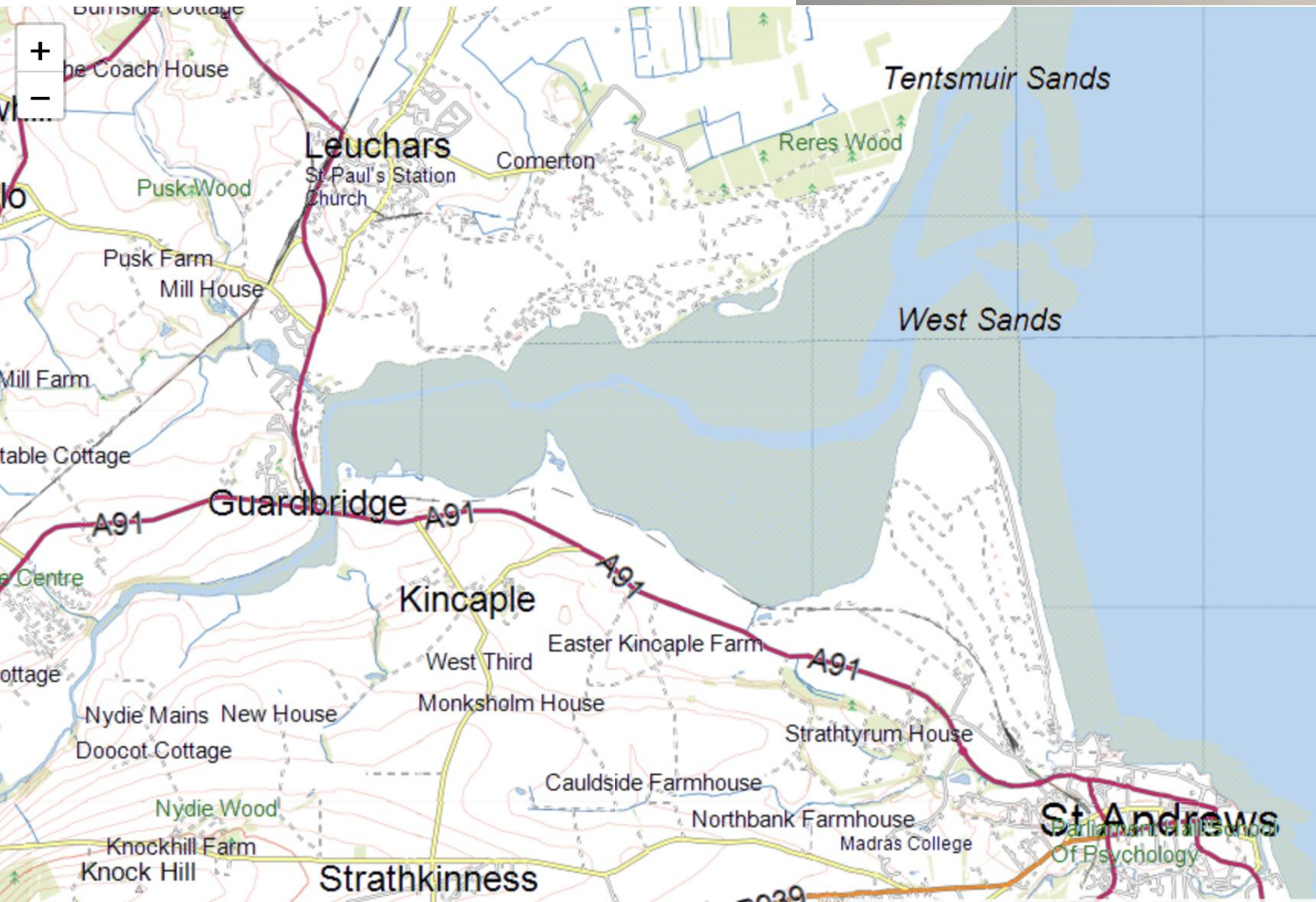
**Cupar**

# Kemback





# Estuary





• **Sustainable Cupar**

• **Eden Angling Association**

• **Fife Coast and Countryside Trust**

• **St Andrew's University**

**The Partners  
one year ago...**



# The Partners now!

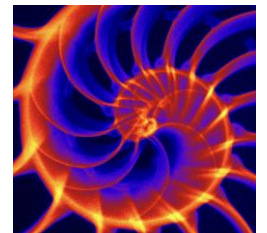
## River Eden Fife



### The River Eden Sustainability Partnership



University of St Andrews



# Our Funding

---

- **NatureScot – Nature Restoration Fund**
- Shared Prosperity Fund
- Sale of Wemyss Cats & Sustainable Cupar Calendars
- Crown Estates Environment Grants
- Fife Communities Climate Action Network
- Neighbourhood Ecosystem Fund
- Kinkell Byre Rewilding - Ceilidh For Nature
- ***New applications in progress...***



# Our Surveys

- Landowners
- Invasive species (INNS)
- Habitats
- Habitat improvement
  - Pressures
  - Opportunities
- ‘Species-level’ invertebrate survey
- Tree survey
- Deer management statement
- **eDNA survey of American signal crayfish**

**What have we  
done so far?**



# Community Engagement

- Landowner Meetings
- River Eden Days
- Talks in the community
- Scientist research event
- **2528 volunteer hours**



# Riverfly

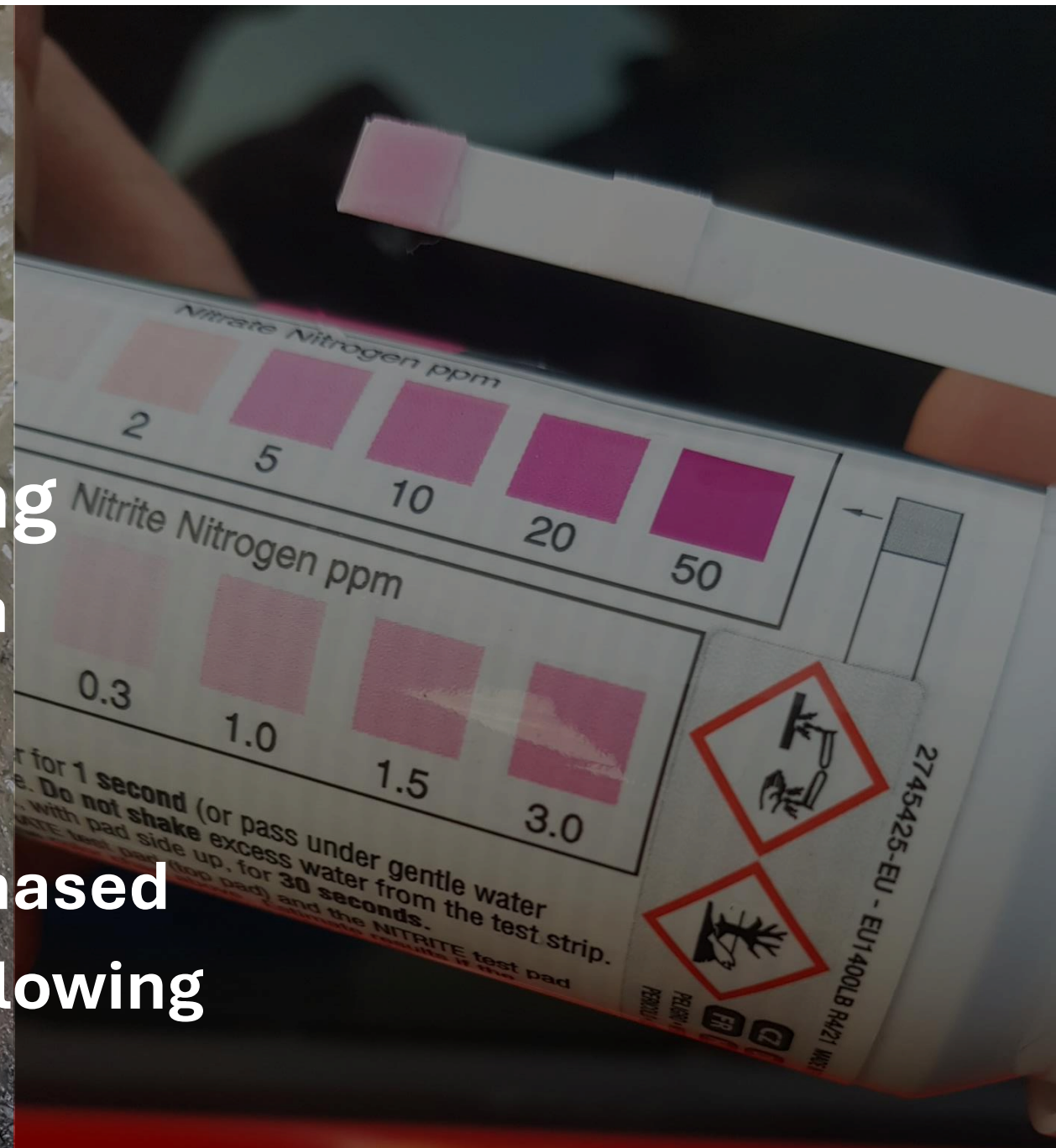


- 30 volunteers trained
- Monitoring 4 sites monthly
- Sessions for school pupils



# Water Quality Monitoring

- 6 sites monitored to create a baseline.
- Discussions with SEPA
- Monitoring equipment purchased
- Volunteers reporting and following up pollution incidents





# INNS control

- Free training
- Essential PPE provided
- Training offered to local landowners and farmers.
- Scottish Water & Fife Council now treating INNS on their assets
- Agreements to carry out treatment increasing.



## Website and Social Media

About Us

Projects ▾

Events

Blog

Resources

Cont

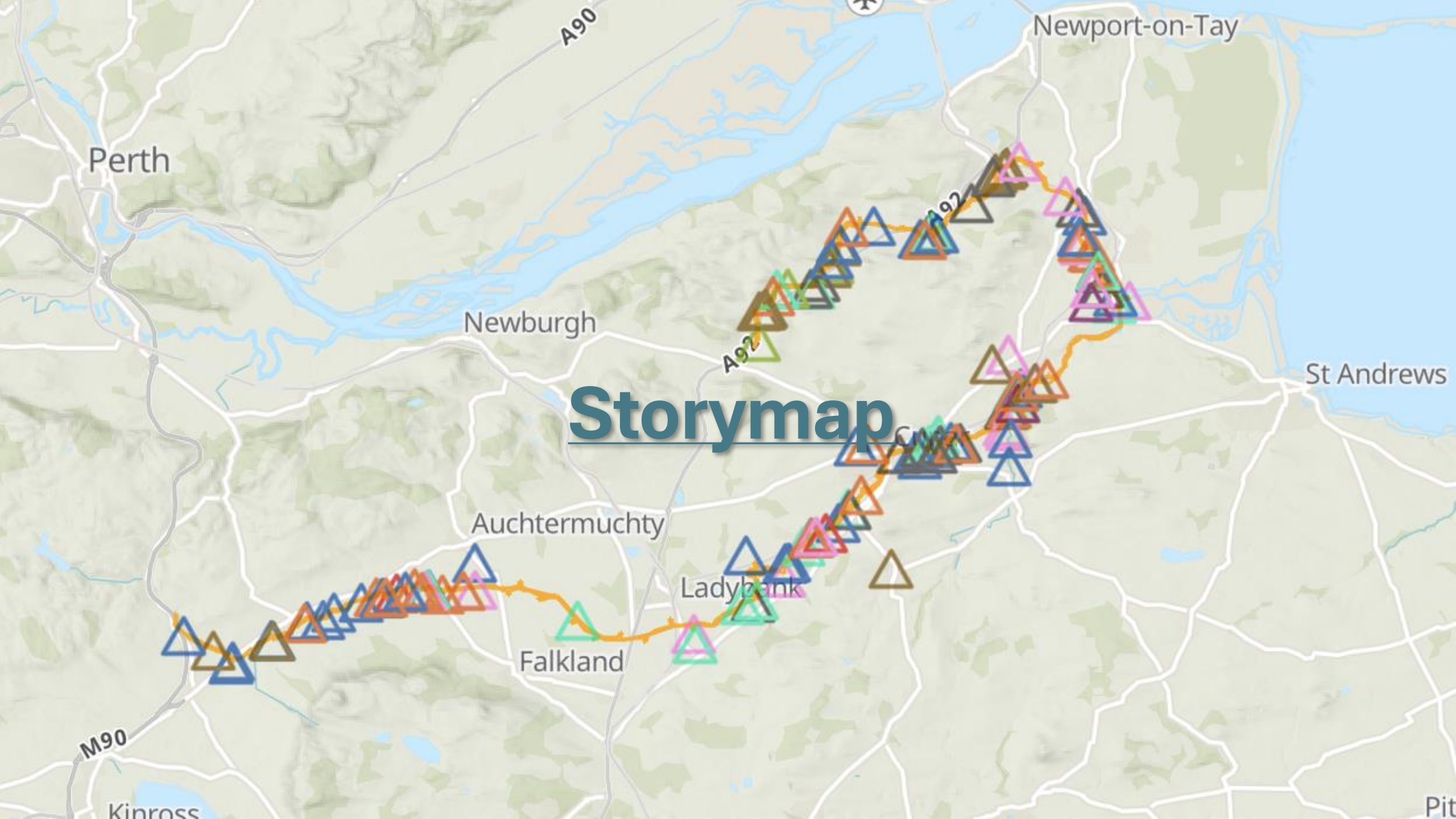
- **New website**  
[www.riveredenfife.org](http://www.riveredenfife.org)
- **Facebook & Instagram social media channels**
- **Contact Form on website - many new contacts.**
- **[New 'report a sighting' function](#)**





# Governance

- **Management Group established**
- **Quarterly Collaborative Partners meeting**
- ***A non-constituted partnership***



Perth

Newport-on-Tay

Newburgh

St Andrews

# Storymap

Auchtermuchty

Ladybank

Falkland

M90

Kinross

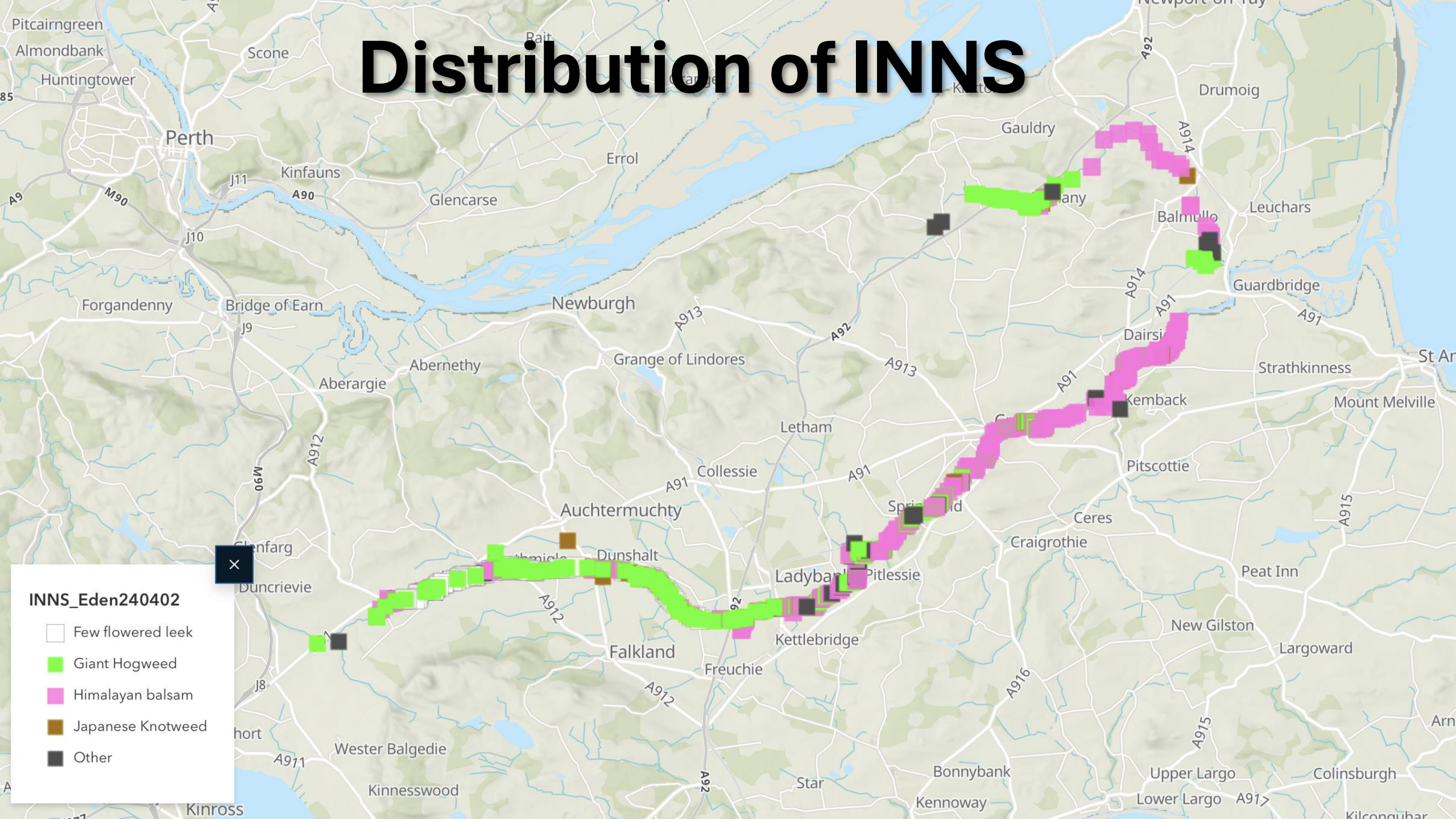
A90

A92










A92

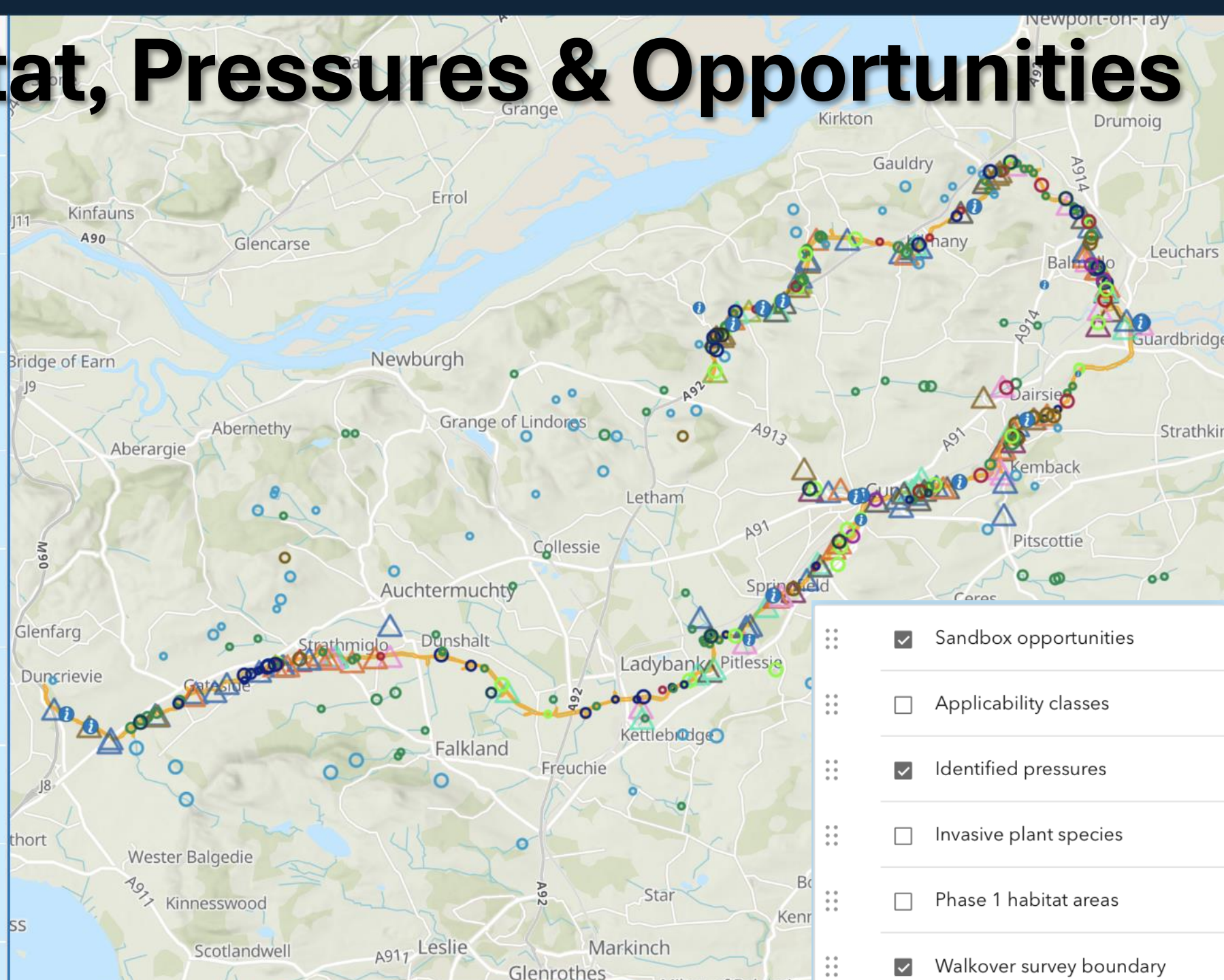
Pit

# Distribution of INNS



# Habitat, Pressures & Opportunities

	Baffles	4
	Bank protection	13
	Embankment removal	2
	Fencing	2
	Large woody structures	106
	Leaky dams	52
	Ponds	34
	Re-meandering	16
	Riparian tree planting	25





**Transition to  
Delivery –**

**Making  
Connections**



# **Emerging Projects & Activities**

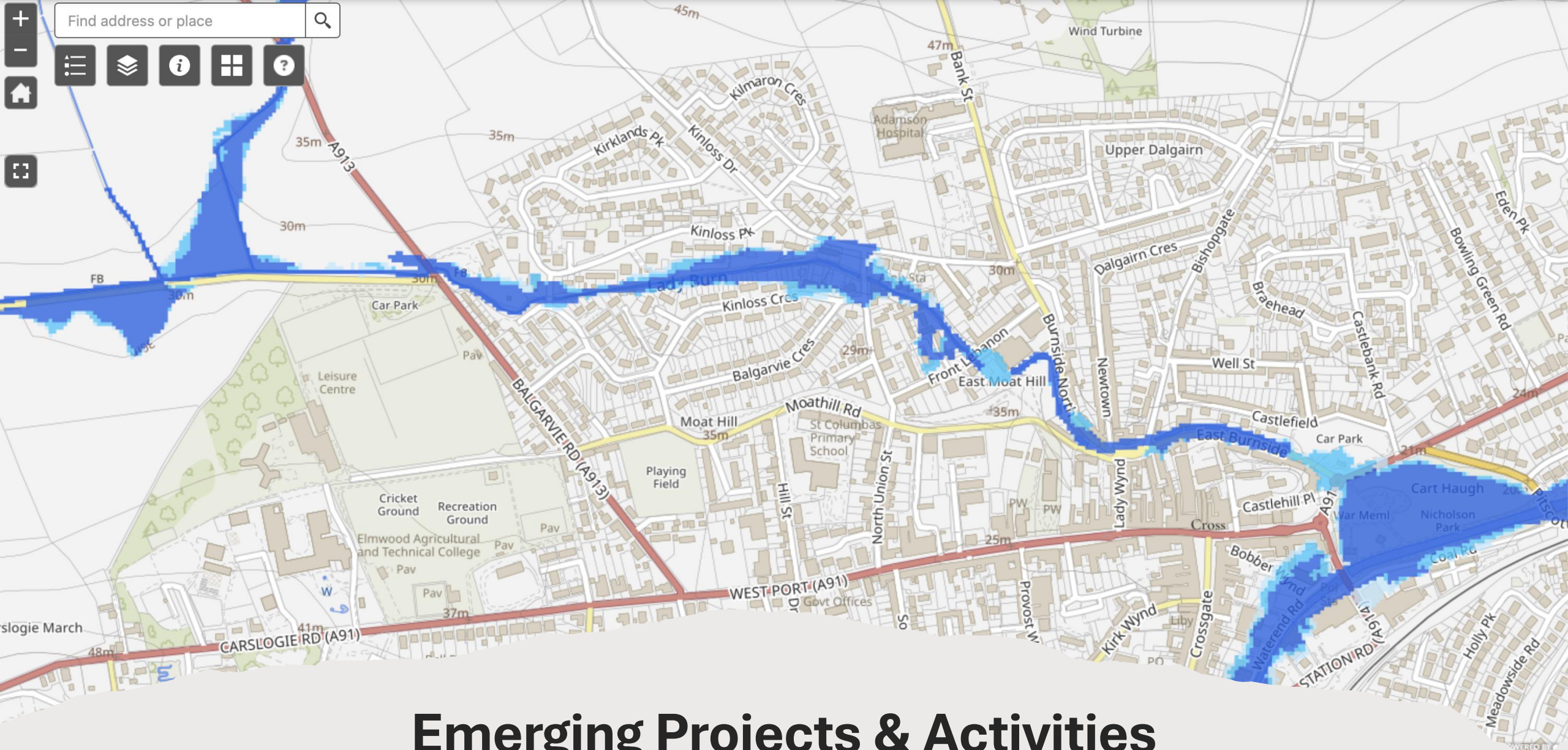
## **The Moor Road**

# Emerging Projects & Activities

---

**Education - Salmon  
in the Classroom  
River in the  
Classroom?**





# Emerging Projects & Activities

## The Lady Burn



# Emerging Projects & Activities

INNS control 2025 and beyond...

# Emerging Projects & Activities

---

## Riverfly +

- More sites
- Extended Riverfly
- Water Quality Monitoring
- MoRph Rivers?



# Emerging Projects & Activities

- **Transition to Delivery Project**
- **Neighbourhood Ecosystem Fund**
- **James Hutton Limited appointed**
- **Landowner meetings**
- **Farm visits and advice**
- **Delivery, Governance and Finance workshop by JHI**





## Emerging Projects & Activities

- Citizen Eden and Citizen Motray
- Encouraging river citizens who...
  - Know and care about the river
  - Act as 'spotters'
  - Use our interactive map to report sightings – wildlife, invasives, issues

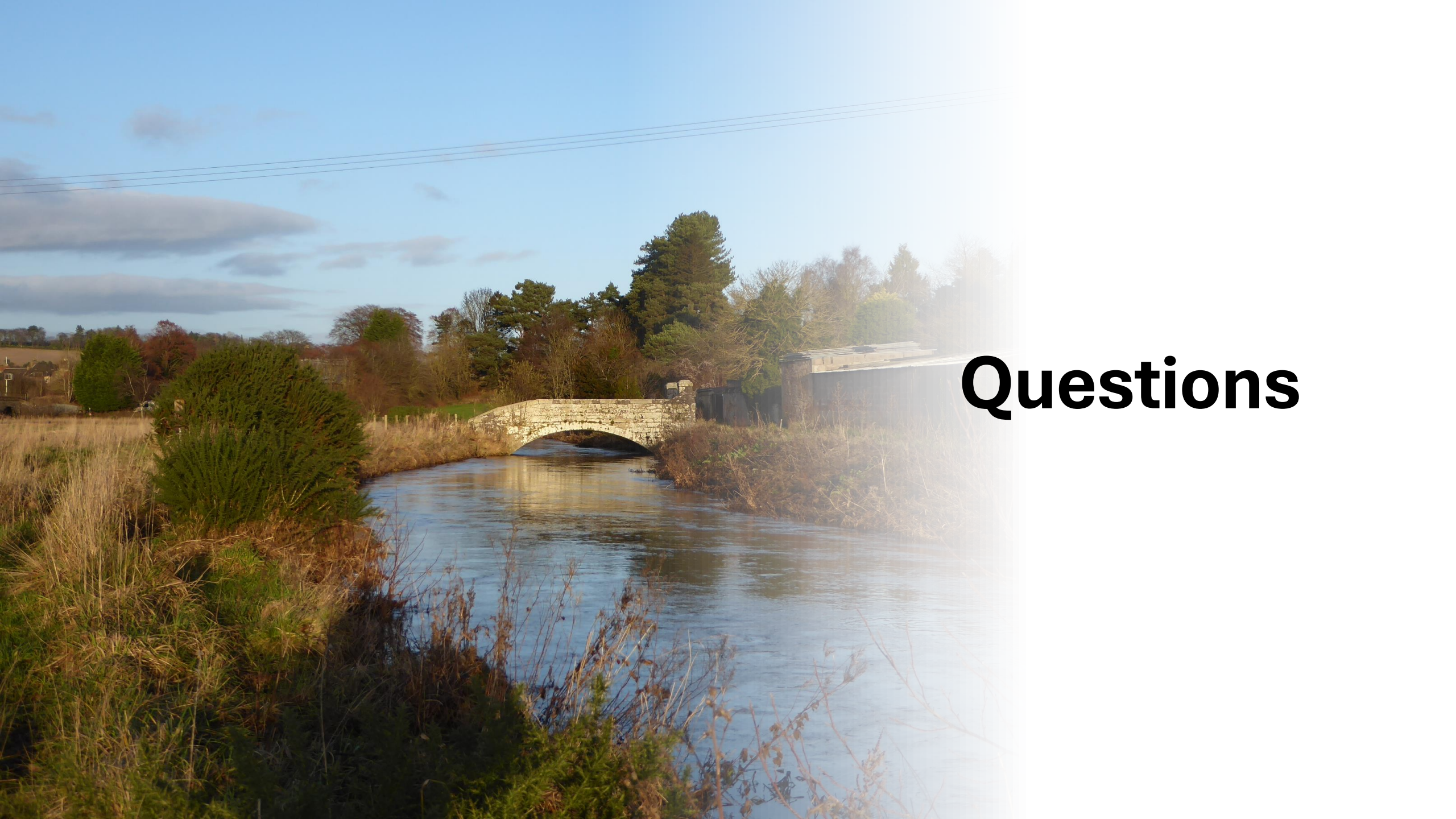


# Emerging Projects & Activities

---

- *Waterbound*
- Communicating and connecting through art
- The rights of the river
- The voice of the river





# Questions

**Is it worth it?**  
**Why am I doing it?**  
**Is it enough?**  
**Can you help?**



# Contact

[restorerivereden@gmail.com](mailto:restorerivereden@gmail.com)

[www.riveredenfife.org](http://www.riveredenfife.org)

 [www.facebook.com/riveredenfife/](https://www.facebook.com/riveredenfife/)

 **@riveredenfife**