



Leverhulme Centre for

**ANTHROPOCENE
BIODIVERSITY**

Freshwater Restoration, Climate Change and the Historic Environment

Michael Stratigos

21 April 2022

106th Scottish Freshwater Group Meeting

Zoom

The Ballachullish Figure, found in 1880 under 1 m of peat surrounded by wickerwork fence.



© NMS



CC BY-SA – Gunther Tschösch

Carpow Logboat, found in 2001 in the Tay, dates from c. 1000 BC

CC BY – Mike McBey

Torr's Pony Cap, found in 1812 while digging a ditch. Owned for a while by Walter Scott.



© NMS

CC BY – Michael Stratigos

CC BY-SA – Nick Bramhall

Scotland tipped to benefit from carbon market boom predicted as firms seek 'home-grown' nature solutions to offset emissions

The Scottish landscape looks set to play an even bigger role in future efforts to tackle climate change if predictions are correct.

Press release

Innovative nature projects awarded funding to drive private investment

A pioneering new fund to drive private investment in nature and tackle climate change has been awarded to 27 projects

Environment

Restoring peat bogs, native trees and coastal wetlands could lock in 17 years of aviation carbon emissions

EXCLUSIVE

Replanting native woodlands, reviving marine life, restoring peat bogs and rewilding farmland could shave a large chunk from the UK's carbon footprint, new analysis suggests

Is there a business case for rewilding Scotland?

The term itself has led to a polarised debate between traditional landowners and environmentalists

SHARE COMMENTS

By **John Glover** Business reporter
12:02, 20 AUG 2021 | UPDATED 07:18, 23 AUG 2021

SPECIAL REPORTS

BrewDog buys 2000 acres at Loch Lomond for carbon capture forest and peatland

Brewer funds woodland projects to declare itself double carbon negative while it prepares to plant one million trees



About Topics **News** Publications Statistics and research Consultations Blogs

Home > News

NEWS More funding for nature restoration

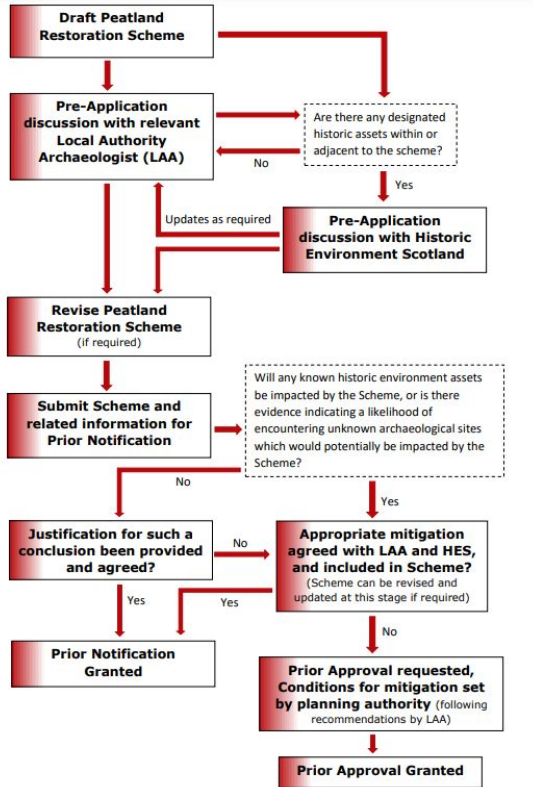
Published: 12 January 2022 09:34
Part of: [Environment and climate change](#)

£12.5 million for projects that benefit nature.

Peatland Restoration and Archaeology in the Planning Process



HISTORIC ENVIRONMENT SCOTLAND | ÀRAINNEACHD EACHDRAIDHEIL ALBA



Guidance for Peatland Restoration and the Historic Environment in Scotland v1-1

B Mann

March 2022

<https://www.algao.org.uk/algao-peatland-restoration-and-historic-environment-guidance>

Are there any scheduled sites in or nearby the scheme that might be impacted?

Will any known historic environment assets be impacted? Or is there a likelihood of encountering and impacting unknown archaeological sites?

SEARCH

Place, Postcode, Easting/Northing or NGR

DATA LAYERS

Listed Buildings 1

Canmore 52 found 1

Canmore Maritime 1

Scheduled Monuments 1

Historic Environment Record 41 found 1

Garden & Designed Landscapes Available 1

Conservation Areas Available 1

Battlefields Available 1

World Heritage Sites Available 1

Historic Marine Protected Areas Available 1

Protected Military Remains, Wrecks Available 1

BASE LAYERS

OS Licensed Scotland Available 1

OS Licensed (hillshade) Available 1

OS Licensed Scotland (greyscale) Available 1

OS Open Data Available 1

OpenStreetMap 1

National Records

Scheduled Monuments

Local Records

© Copyright and database right 2022. All rights reserved. Ordnance Survey licence number 100057073.

100 m NS 81281 96858 [281281, 696858]

University of Stirling



HISTORIC ENVIRONMENT SCOTLAND

ARAINNEACHD IACHDRACHDHEIL ALBA



Scottish Historic Environment Records Forum

feedback

MOVE
SELECT
Circle
Polygon

SEARCH

Place, Postcode, Easting/Northing or NGR

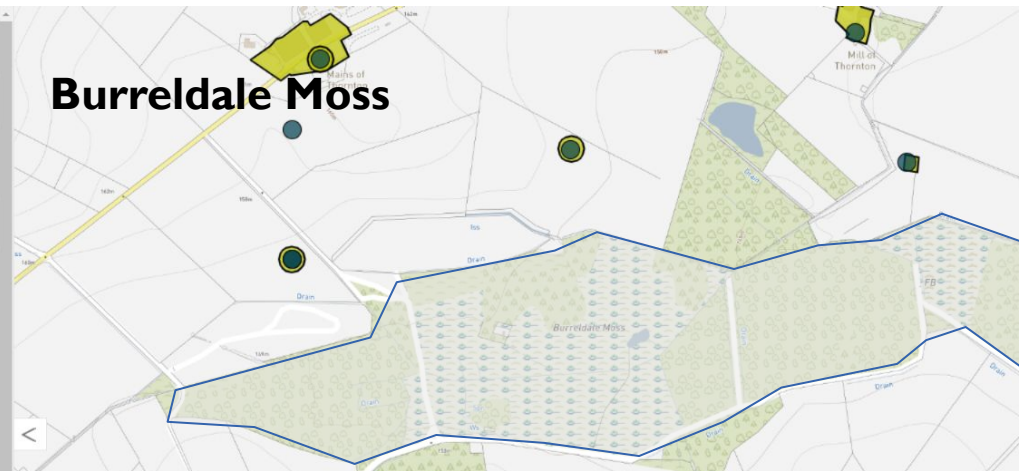
DATA LAYERS

- Listed Buildings Available
- Canmore 25 found
- Canmore Maritime Available
- Scheduled Monuments Nothing to display
- Historic Environment Record 27 found
- Garden & Designed Landscapes Available
- Conservation Available
- Battlefields Available
- World Heritage Available
- Historic Maritime Available
- Protected Mills Available

BASE LAYERS

- OS Licensed Street View Available
- OS Licensed Vector Available
- OS Licensed Street View Available
- OS Open Data Available
- OpenStreetMap

Burreldale Moss



Flanged Axehead (Bronze)

Site Name Burreldale Moss

Classification Flanged Axehead (Bronze)

Alternative Name(s) Fyvie

Canmore ID 19724

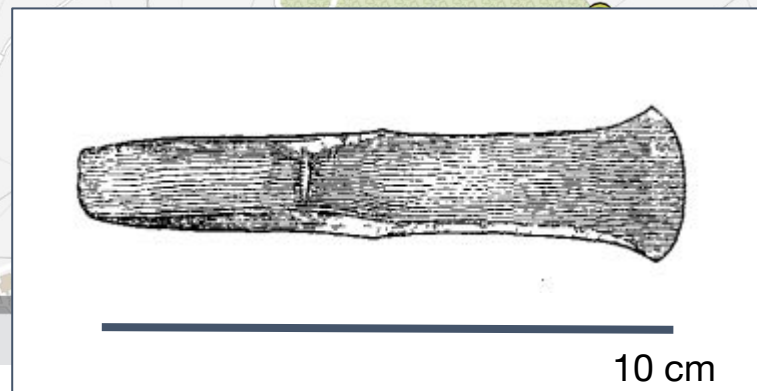
Site Number NJ82SW 34

NGR NJ 82 23

NGR Description NJ c. 82 23

Datum OSGB36 - NGR

Permalink <http://canmore.org.uk/site/19724>



Archaeological Mitigations



- Walkover survey
- Temporary Fencing of Known Sites
- Toolbox Talks
- Watching Brief
- Evaluation or Full Excavation

ALGAO Peatland Restoration Guidance – Mann 2022

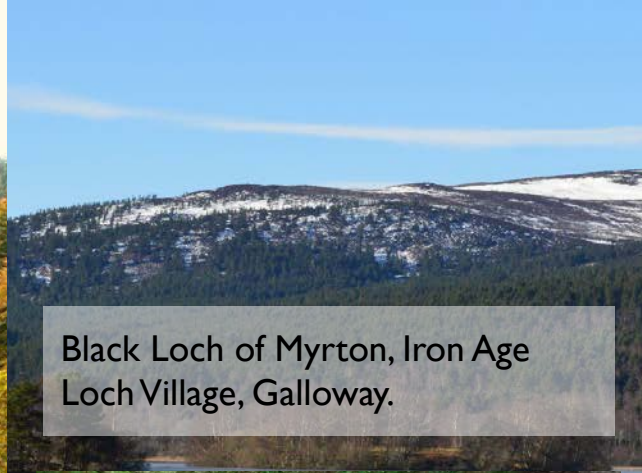
Bronze Age field boundary
eroding out of peat hag, West
Mainland, Shetland



© Claire Corbett



Mesolithic flint from Mid-Holocene
river terraces on the Dee,
Aberdeenshire.



Black Loch of Myrton, Iron Age
Loch Village, Galloway.



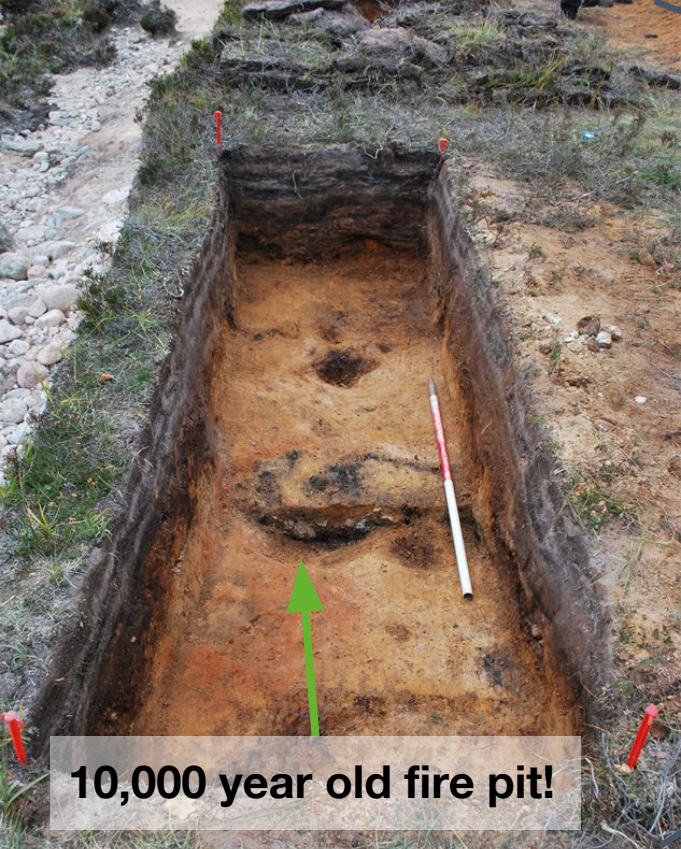
CC BY – Michael Stratigos

CC BY-SA – Nick Bramhall

CC BY – Mike McBey



Chest of Dee, Mesolithic Occupation



10,000 year old fire pit!

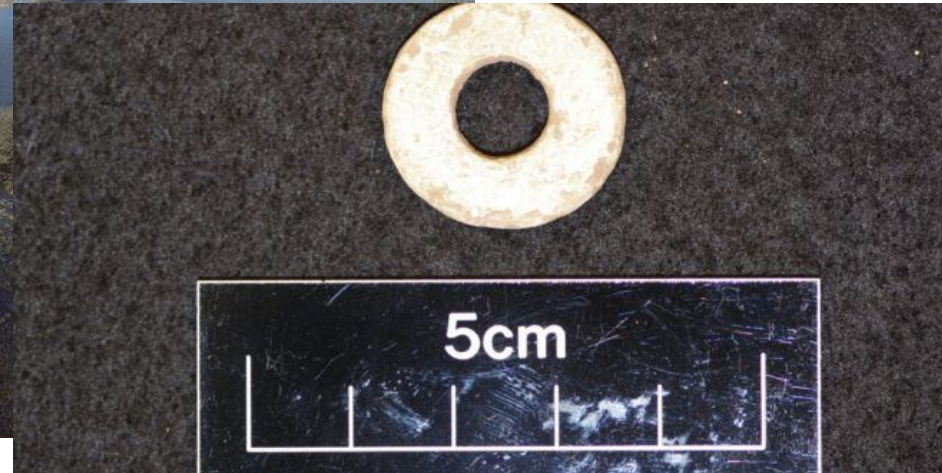


Wickham-Jones, C. et al (2020). New Evidence for Upland Occupation in the Mesolithic of Scotland. *Proceedings of the Prehistoric Society*, 86, 13-42. doi:10.1017/ppr.2020.8

Best Practice – National Trust for Scotland



***Threave Wetland
Metal Detecting***

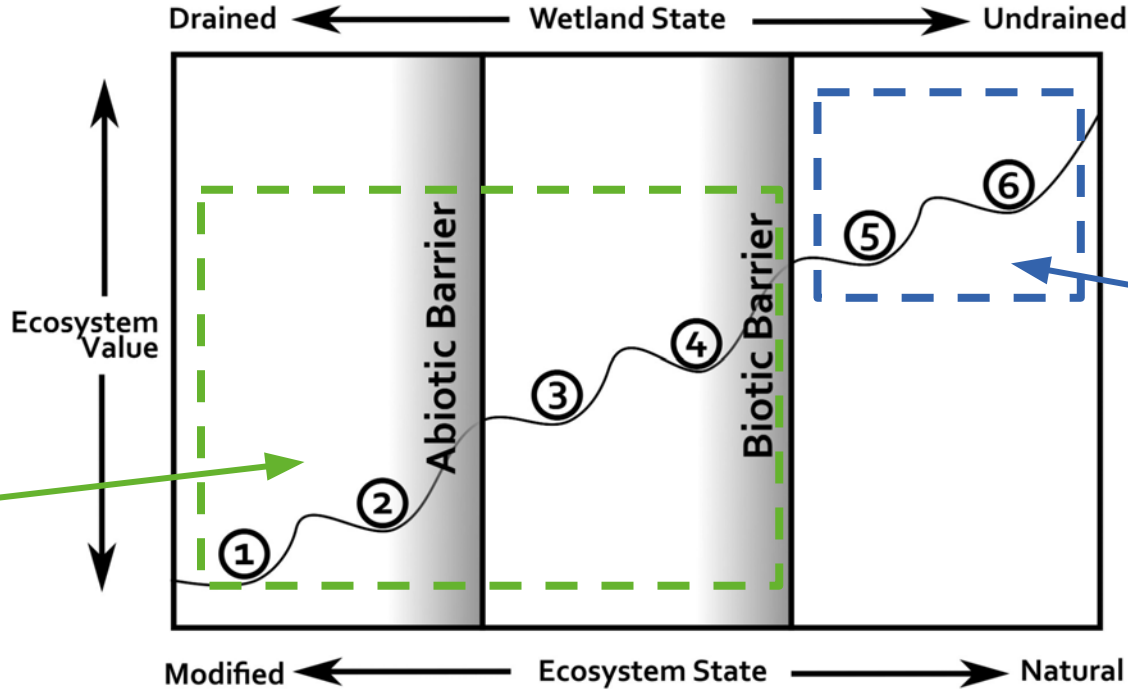


What value does archaeology bring to freshwater restoration?



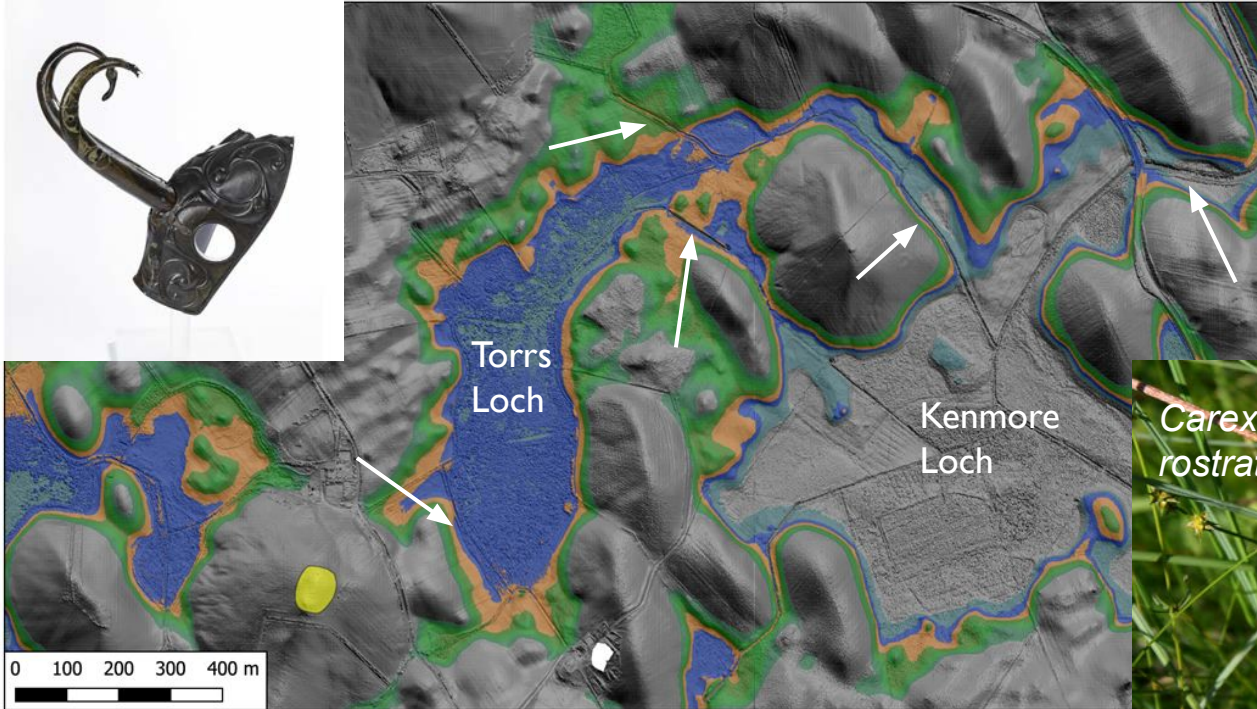
Wetland
Archaeology as
ARCHIVE

Wetland
Archaeologists
are usually
working here



Wetland
Archaeologists
often have a
good
understanding of
what this might
have looked like
(with its people
too)

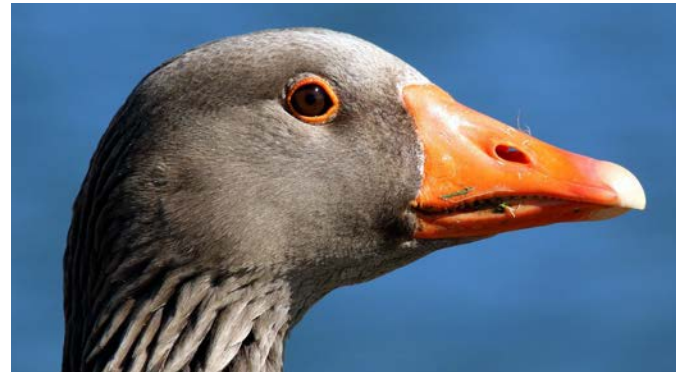
What value does archaeology bring to freshwater restoration?



Wetland Archaeology
as **PROCESS**



What value does archaeology bring to freshwater restoration?



**The
British
Academy**

Wetland Archaeology as **ARCHIVE** and **PROCESS**

Thank You

LEVERHULME
TRUST



Leverhulme Centre for

**ANTHROPOCENE
BIODIVERSITY**